



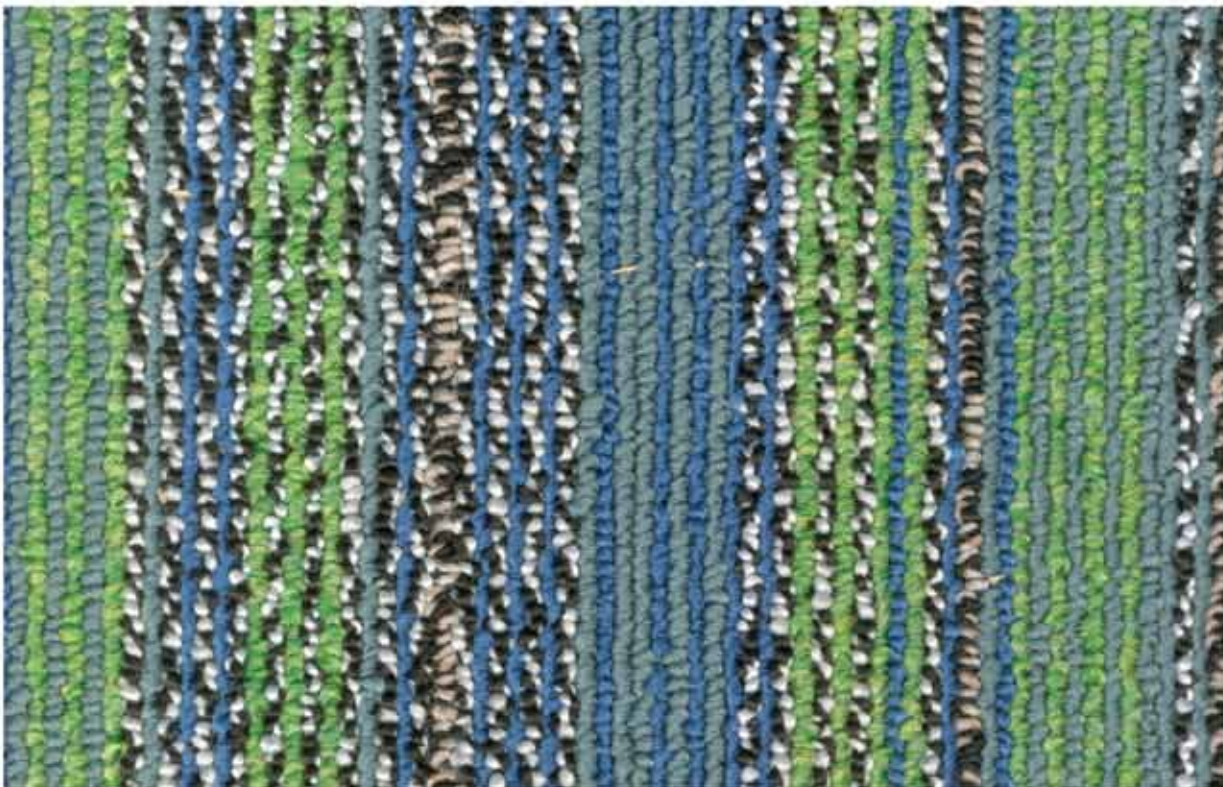
*Paul Summit*



**Heavy Duty Commercial Carpet Tiles**







165



575





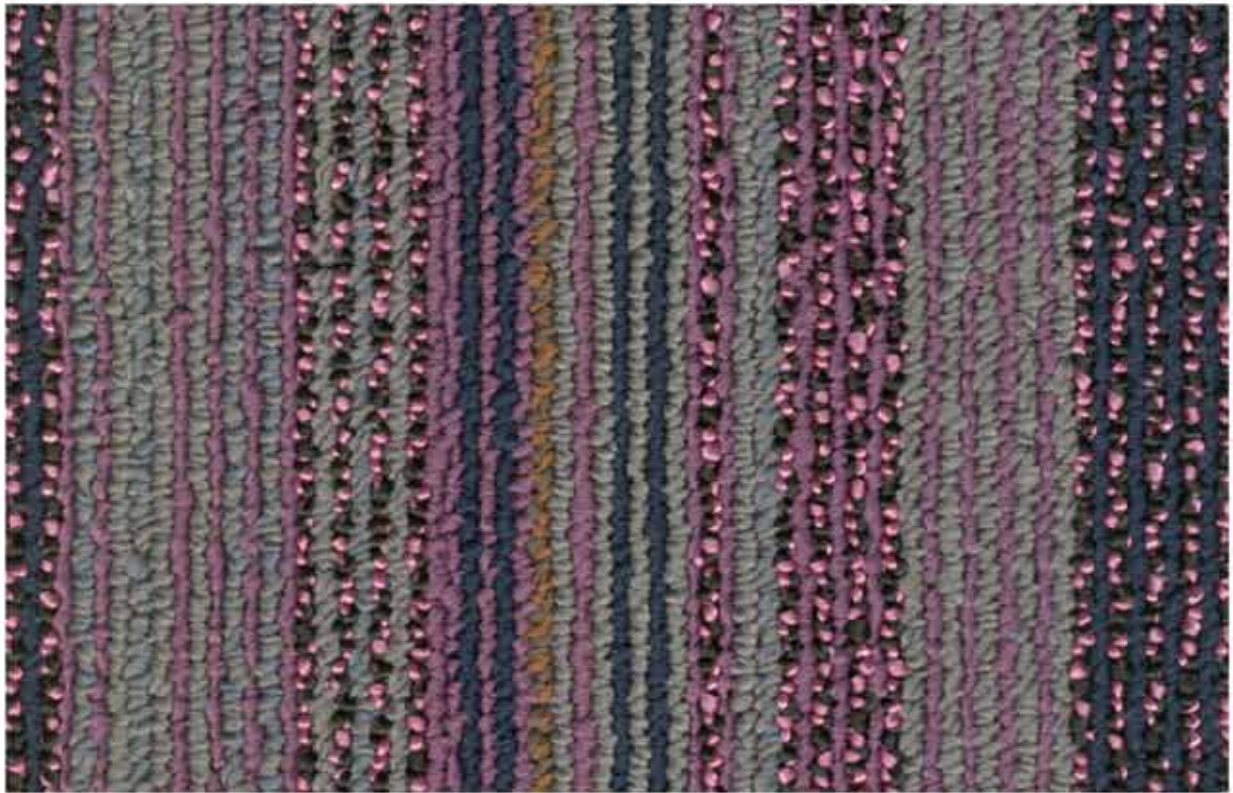


095

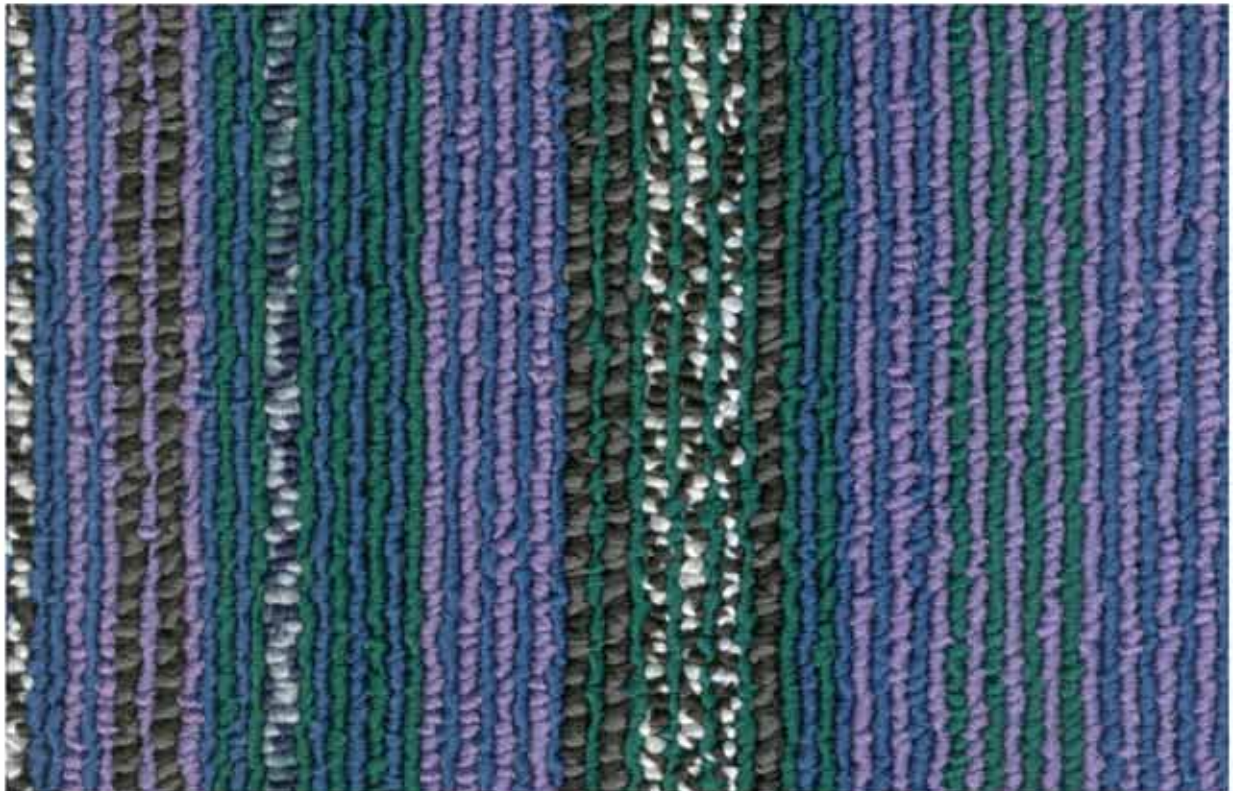


025





085

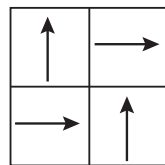


035

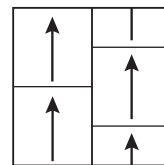


# Paul Summit

Construction	Loop Pile
Yarn/ fibre	100% Olefin
Dye Method	Solution Dyed
Pile Weight	550g/m <sup>2</sup>
Pile Height	3.5mm
Gauge	1/10th
Stitches / 10cm	41.0
Tile Size	500 x 500mm
Backing	Glass fiber Reinforced PVC
Total Thickness	6.00mm
Total Weight	4.9kg/m <sup>2</sup>
Tuft Density	161950/m <sup>2</sup>
Dimensional Stability	DXN 54318 6.20
Electrostatic Propensity	AATCC - 134 < 3.5KV
Fire Rating ISO 9239.1	4.4kw/m <sup>2</sup> Critical Radiant Flux
Adhesive	ECO-800 Pressure Sensitive Low VOC
Installation Method	Quarter Turn (preferred)



Quarter Turn



Ashilar



Sound  
Insulation



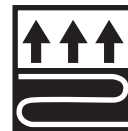
Heat  
Insulation



Anti-static



Colorfast



Wearproof



Anti-  
flammability

**Terms and Conditions:** Specifications are subject to manufacturing tolerances and maybe changed without prior notice. Dye lots may vary in colour from sample and between production lots. All product purchases are subject to Messara Trading Standard Terms and Conditions of Sale. Please refer to our Installation Guideline, Maintenance Manual and Warranty Document for further clarification.

**Disclaimer:** This Brochure is presented for informational purposes only. Every effort is made to ensure that carpet images are of an accurate representation of the product. However, they are for illustrative purposes only and colour variations may occur in actual product, and between die series. Please note that lineal patterns when installed directional, may produce an undesired effect when lines of the same colour meet of two edges. Installers need to monitor this during installations and reposition tiles where appropriate. Patterns that are random in nature may contain additional colour ways to the ones displayed on the samples. Please consult your commercial sales consultant for further informations.

