

# Dorothy

IVORY 112





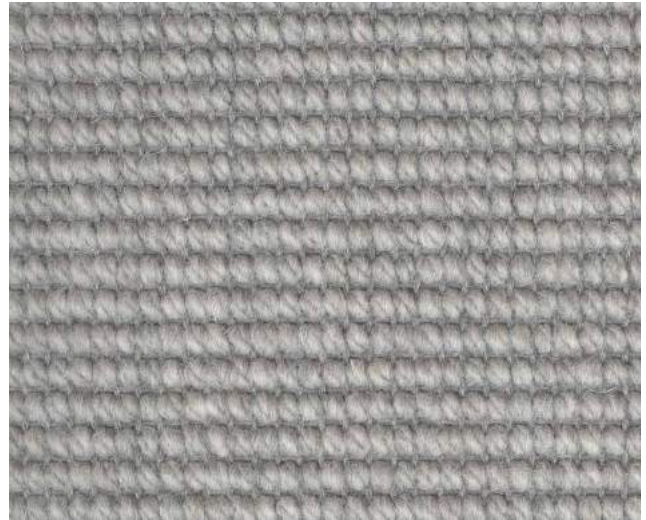
MADE IN  
NETHERLANDS

# Dorothy



ANTHRACITE

128



SILVER

122



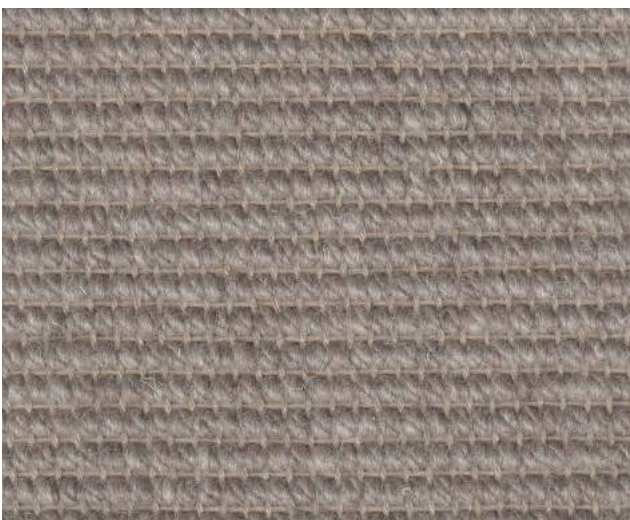
NATUREL

164



IVORY

112



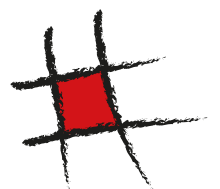
BEIGE

116



LIGHT BROWN

118














# Dorothy

IVORY 112

## SPECIFICATION

Type of Manufacture	: Woven
Gauge	: Reed 23
Quality Description	: Loop Pile
Pile Material	: 10% Wool / 90% PP
Warp	: Synthetic
Weft	: Synthetic
Secondary Backing	: PP - Backing
Pile Height	: 1,4 mm
Total Thickness	: 5,8 mm
Pile Weight	: 550 g/m <sup>2</sup>
Total Weight	: 1825 g/m <sup>2</sup>
Width	: 400 cm
Colour fastness to light	: ISO 105 B02 7

## CLASSIFICATIONS

Classification	: EN 1307 23 Heavy Domestic Use	
	: 32 General Commercial Use	
Castor Chair Resistance	: EN 985	
Recommendation	: Floor Mat	
Stairs	: EN 1963, B	
Heat Retention	: ISO 8302 0,07m <sup>2</sup> K/W	
Anti-static	: <2.0 kV at 25% RH	
Flammability	: Class Cfl s1	
Comfort	: Class LC1	

EN 14041



All Specifications are subject to normal commercial tolerances.