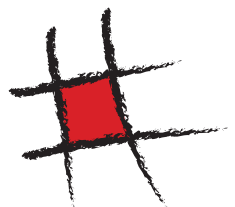




*Cannes*





# Cannes

---



Black Pitch 150325



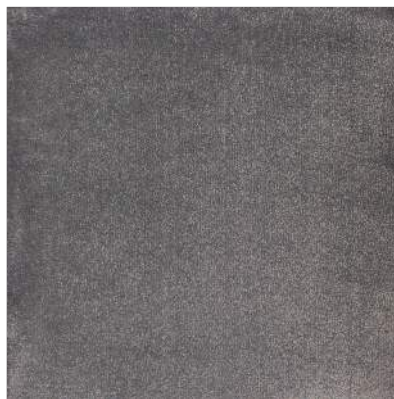
Mistletoe 150320



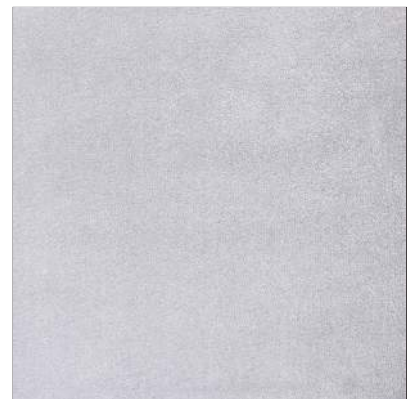
Slate 150314



Suffolk Stone 150305



Moles Paw 150302



Oxford 150301



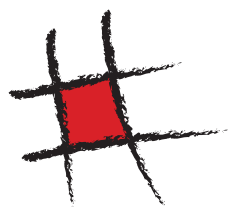
Marsala 150236



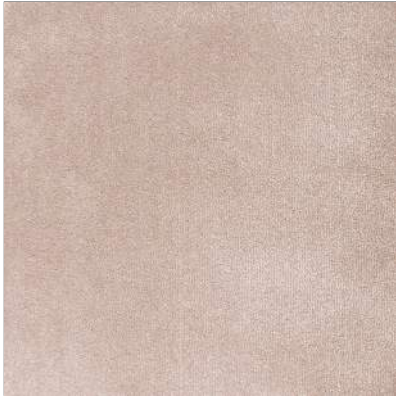
Ochre 150204



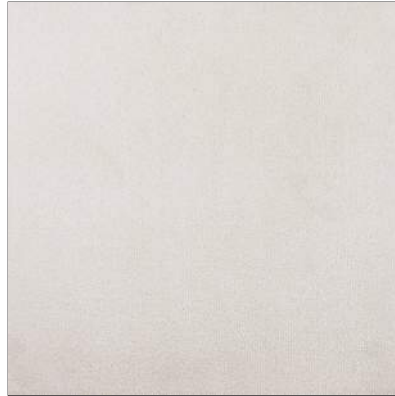
London 150120



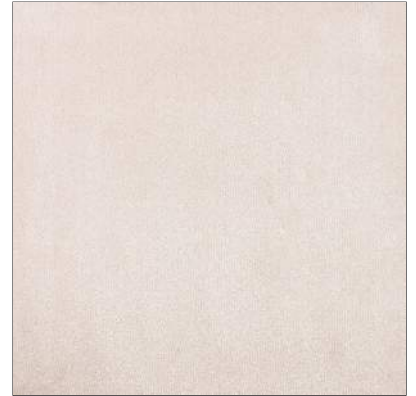
# Cannes



Charleston 150112



Chalk 150108



Elephant 150105



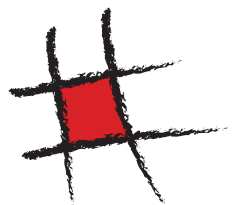
Navy Blue 150425



White 150101

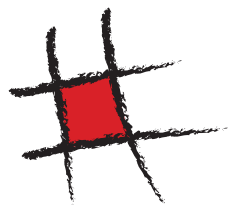


Patrol 150412





# Cannes



# Cannes

## Specification

Construction	: Tufted 1/10 cut pile
Pile Material	: Faux Silk
Secondary Backing	: Luxury Backing
Pile Weight	: ca. 1.85 kg / sq mtr +/- 7.5%
Total Weight	: ca. 2.60 kg / sq mtr +/- 7.5%
Carpet Thickness	: ca. 14 mm +/- 7.5%
Usage Classification EN 1307:2014	: Class 33 / Heavy Commercial use
Comfort rating EN1307:2014	: LC 5
Static Electricity Charge	: Anti static
Light ISO 105 B02:2013	: 5-6
Rubbing - Dry ISO 105 X12	: 4-5
Rubbing - Wet ISO 105 X12	: 4-5
Water ISO 105 E01 : 2013	: 4
Water Stains En1307 / EN15115	: 4-5
TOG rating	: 1.64
Burn Behaviour BS EN ISO 9239-1:2002	: Bfl-S1
Stair Suitability	: Yes
Widths	: 4mtr +/- 1%
Cut Length service	: Yes
Standard Rug sizes	: No
Bespoke Rug service	: Yes

**Matching:** This sample may not be from the same batch as current stocks and should be used only as a guide.

**Installation:** Professional installation is recommended and essential to a good quality underlay. Avoid exposure direct sunlight. Areas that might receive prolonged exposure to direct sunlight should be protected by the use of blinds or curtains.

**Maintenance:** To maintain your carpets appearance it is recommended that it is vacuumed at least three times per week to remove particles of dirt and dust. It should be noted that overtime foot traffic will flatten the pile in main walkways causing areas of differential wear. This can cause the carpet to show areas of light and dark shading, this happens to all quality of velour carpets and would not be accepted as a basis of any complaint.

