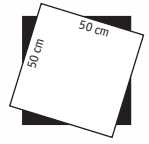




SPRING

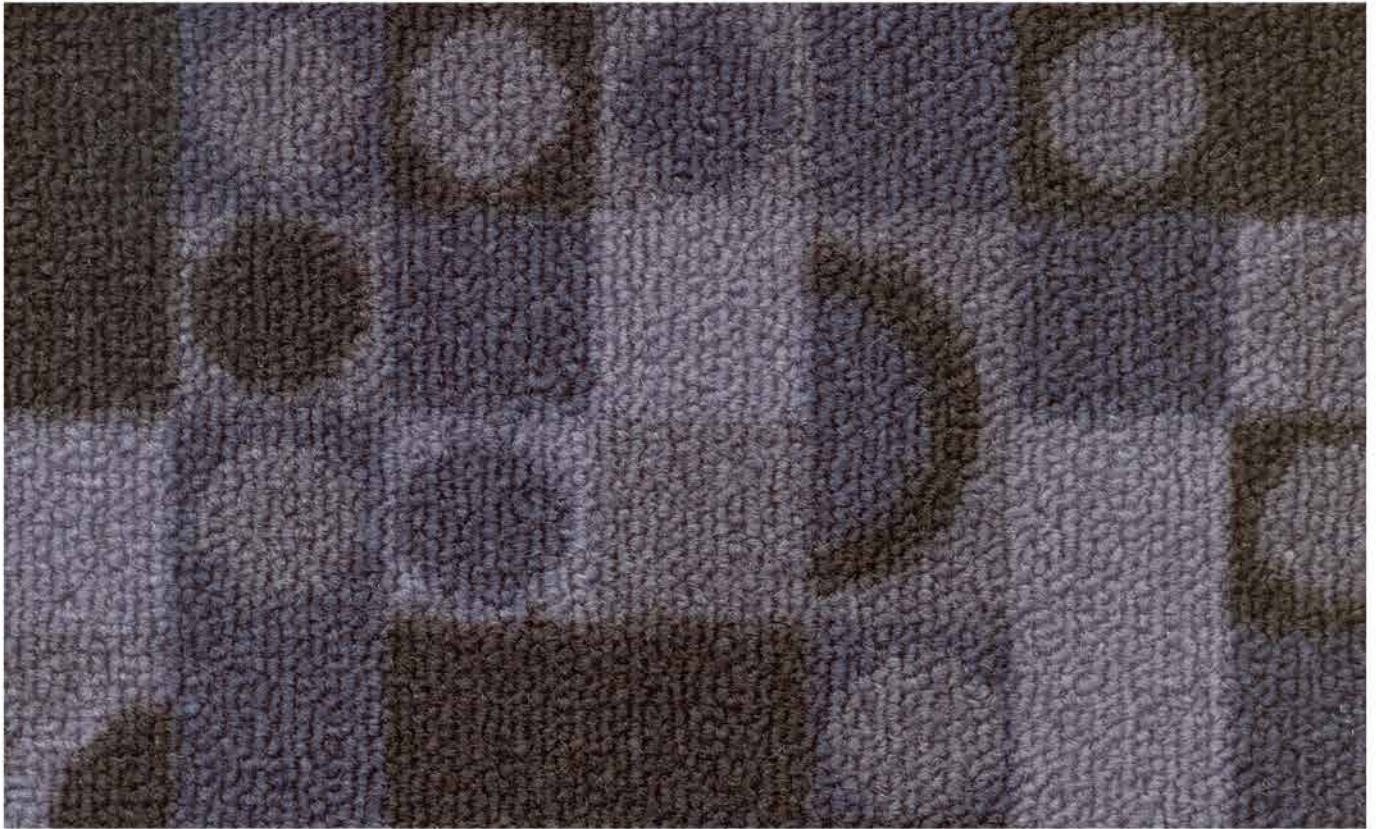
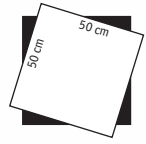




SPRING 02



SPRING 03



SPRING 05



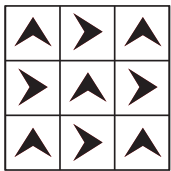
SPRING 06

Spring

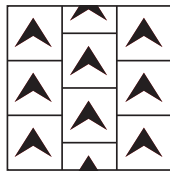
Specification

Style	:	Spring
Construction	:	Level loop
Fiber	:	Invista Nylon
Gauge	:	5/64
Average Pile Height	:	3 ±0.5mm
Backing	:	PVC
Tile size	:	50 x 50cm
Flammability	:	≥4.5kW / m ² (ASTM E 648-Class I)

Approved Installation methods:



Quarter-turn



Ashlar

Terms and Conditions: Specifications are subject to manufacturing tolerances and maybe changed without prior notice. Dye lots may vary in colour from sample and between production lots. All product purchases are subject to Messara Trading Standard Terms and Conditions of Sale. Please refer to our Installation Guideline, Maintenance Manual and Warranty Document for further clarification.

Disclaimer: This Brochure is presented for informational purposes only. Every effort is made to ensure that carpet images are of an accurate representation of the product. However, they are for illustrative purposes only and colour variations may occur in actual product, and between die series. Please note that lineal patterns when installed directional, may produce an undesired effect when lines of the same colour meet of two edges. Installers need to monitor this during installations and reposition tiles where appropriate. Patterns that are random in nature may contain additional colour ways to the ones displayed on the samples. Please consult your commercial sales consultant for further informations.

