



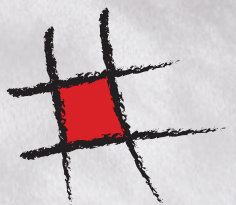
Antibes



MADE IN
NETHERLANDS



TEKSol
FLOORING EXPERTS





MADE IN
NETHERLANDS

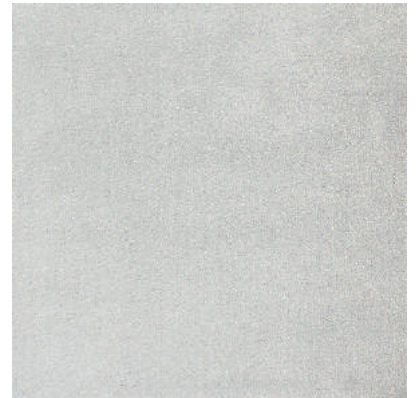
Antibes



Black Pitch 150325



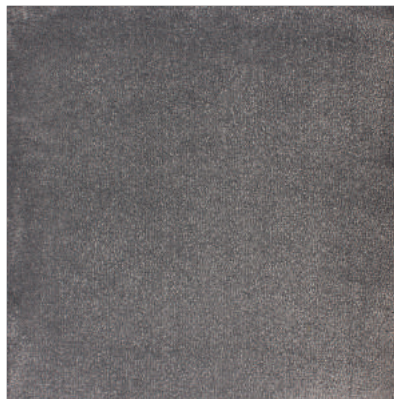
White 150101



Silver 150300



Suffolk Stone 150305



Moles Paw 150302



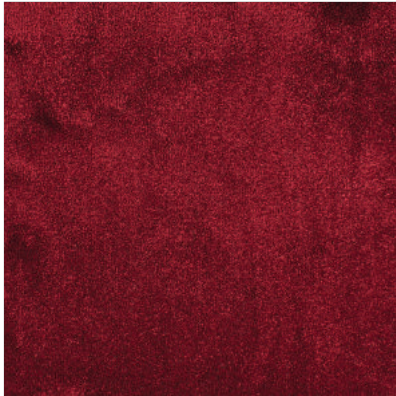
London 150120





MADE IN
NETHERLANDS

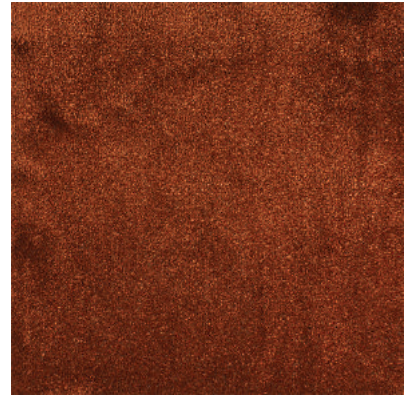
Antibes



Marsala 150236



Ochre 150204



Rust 150248



Charlston 150112



Chalk 150108



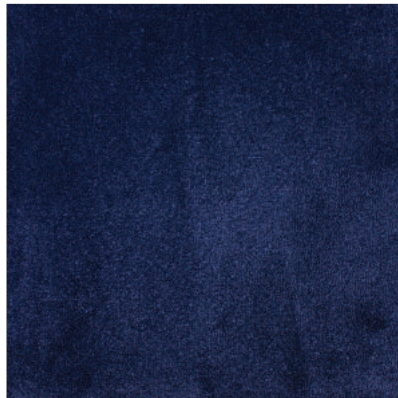
Elephant 150105



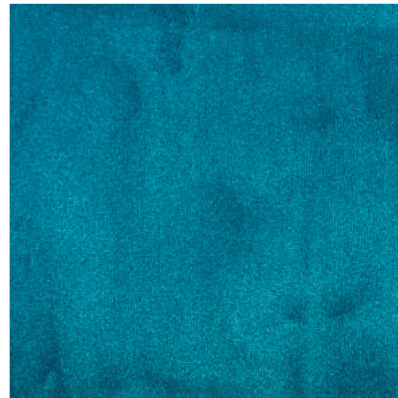


MADE IN
NETHERLANDS

Antibes



Navy Blue 150425



Patrol 150412





Antibes



Specification

Construction	: Tufted 1/10 cut pile
Pile Material	: Faux Silk
Secondary Backing	: Luxury Backing
Pile Weight	: ca. 1.85 kg / sq mtr +/- 7.5%
Total Weight	: ca. 2.60 kg / sq mtr +/- 7.5%
Carpet Thickness	: ca. 14 mm +/- 7.5%
Usage Classification EN 1307:2014	: Class 33 / Heavy Commercial use
Comfort rating EN1307:2014	: LC 5
Static Electricity Charge	: Anti static
Light ISO 105 B02:2013	: 5-6
Rubbing - Dry ISO 105 X12	: 4-5
Rubbing - Wet ISO 105 X12	: 4-5
Water ISO 105 E01 : 2013	: 4
Water Stains En1307 / EN15115	: 4-5
TOG rating	: 1.64
Burn Behaviour BS EN ISO 9239-1:2002	: Bfl-S1
Stair Suitability	: Yes
Widths	: 4mtr +/- 1%
Cut Length service	: Yes
Standard Rug sizes	: No
Bespoke Rug service	: Yes

Matching: This sample may not be from the same batch as current stocks and should be used only as a guide.

Installation: Professional installation is recommended and essential to a good quality underlay. Avoid exposure direct sunlight. Areas that might receive prolonged exposure to direct sunlight should be protected by the use of blinds or curtains.

Maintenance: To maintain your carpets appearance it is recommended that it is vacuumed at least three times per week to remove particles of dirt and dust. It should be noted that overtime foot traffic will flatten the pile in main walkways causing areas of differential wear. This can cause the carpet to show areas of light and dark shading, this happens to all quality of velour carpets and would not be accepted as a basis of any complaint.

