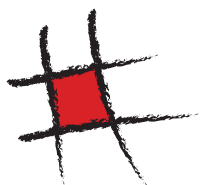


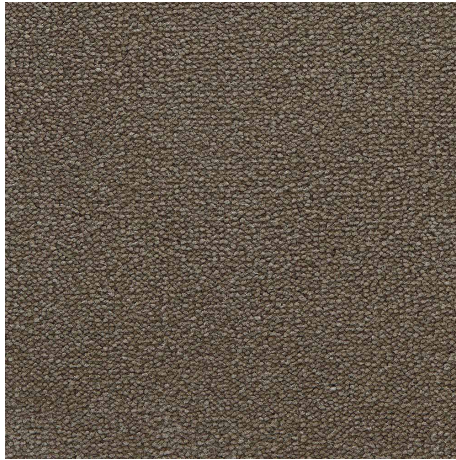
 MADE IN  
THE NETHERLANDS

# Switch

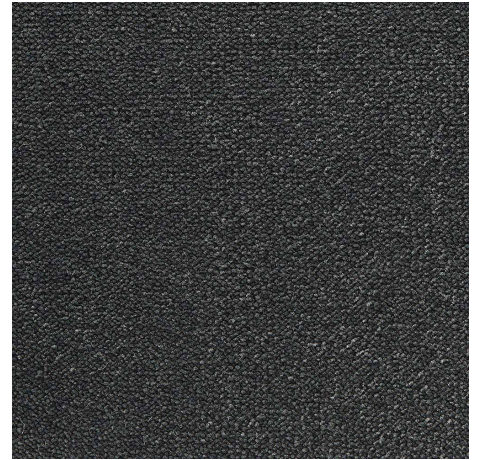




122 Tofu



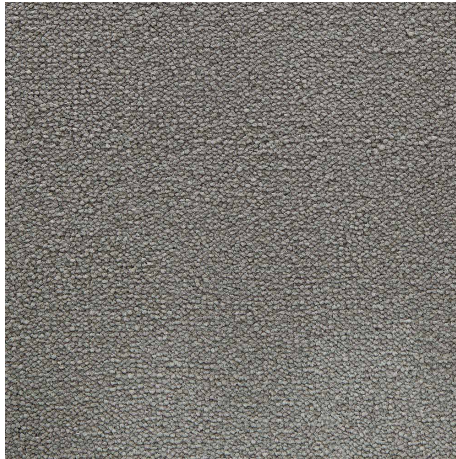
134 Dust



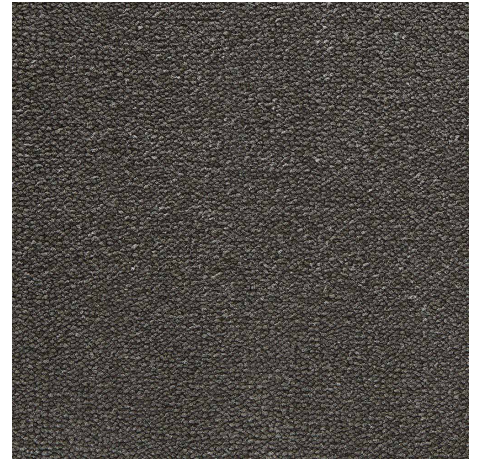
189 Graphite



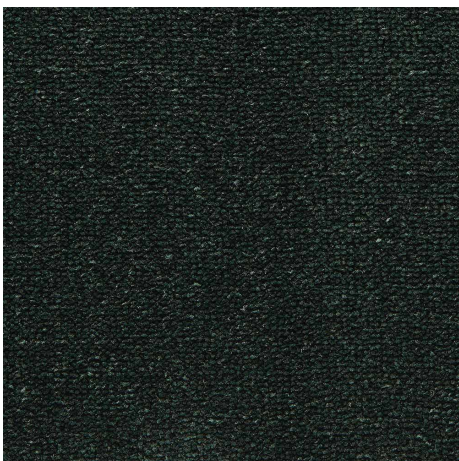
102 Sugar



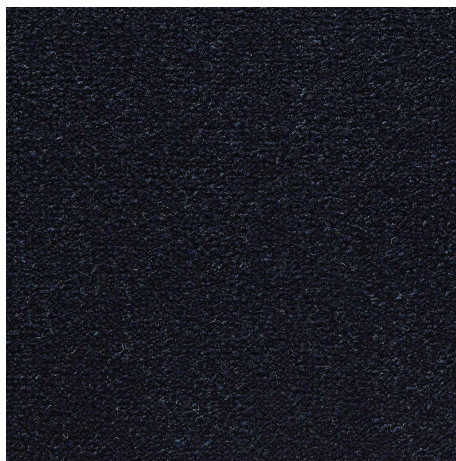
139 Gray



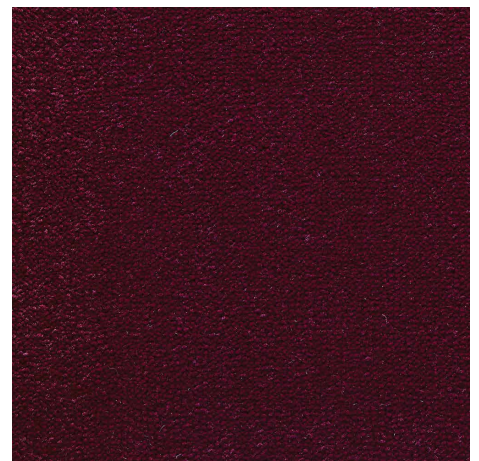
184 Peat



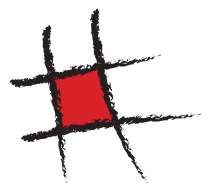
194 Forest



191 Ink



175 Plum





102 Sugar

## TECHNICAL INFORMATION

Construction	ISO 2424	5/64" soft cut pile
Yarn Content	ISO 2424	Polyamide PA 6 SD
Backing	ISO 2424	Actionbac®
Suitability	EN 1307	23/32 general contract use
Pile Weight	ISO 2424	1,750 gr/m <sup>2</sup>
Total Weight	ISO 8543	2,710 gr/m <sup>2</sup>
Pile Height	ISO 1766	9.5 mm
Total Thickness	ISO 1765	11.0 mm
Tuft Density	ISO 1763	302,400 tufts/m <sup>2</sup>
Width	CEN/TS 14159	ca 4m
Thermal Resistance	ISO 8302	0.11 m <sup>2</sup> K/W
Flammability	ISO 13501-1	Cfl-s1
Sound Absorption	ISO 353	0.20 ΔLw
Impact Sound Insulation	ISO 10140-3	32 dB



EN 14041  
EN 1307

PRODIS: 9C71CODF  
DOP: 1025-128426

