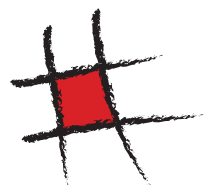


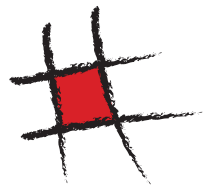
Universe



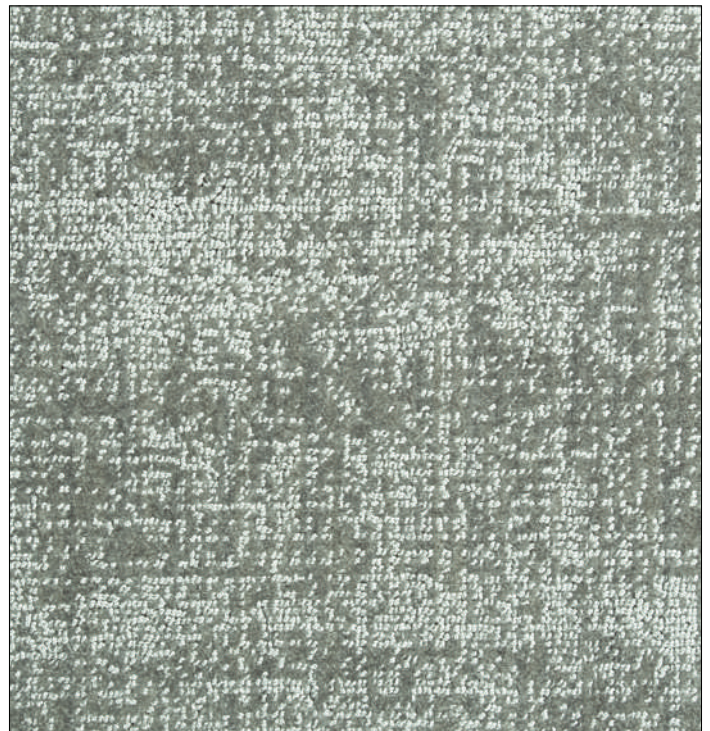
DESIGNED IN THE
NETHERLANDS



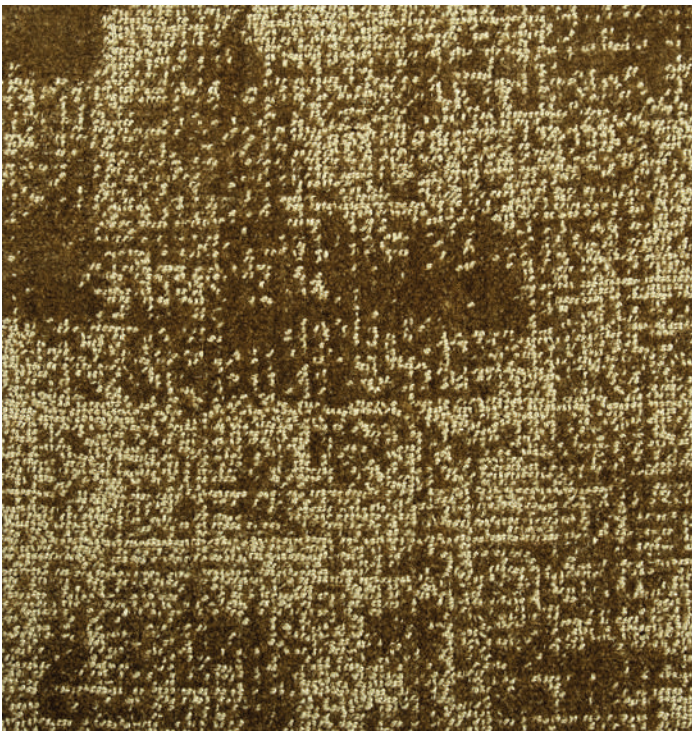
Universe



Opal 002



Silver 225



Gold 013

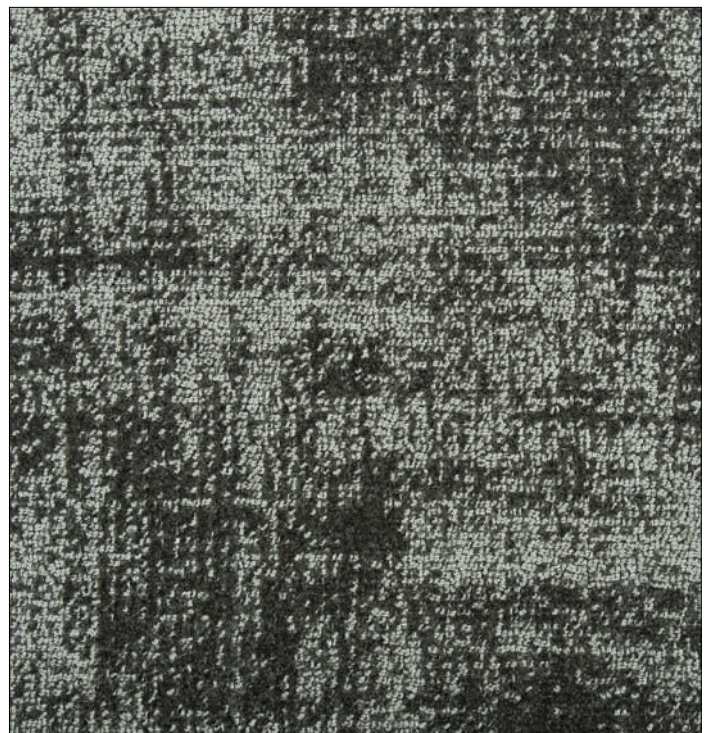


Marble 686

Universe



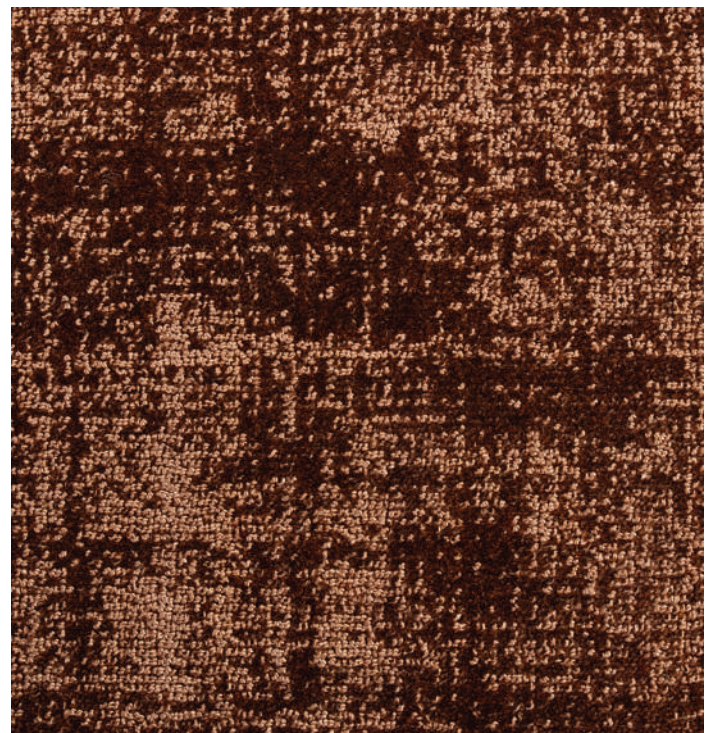
Platinum 007



Graphite 999




Cobalt 809



Garnet 001

Universe



DESIGNED IN THE
NETHERLANDS



SPECIFICATION

Construction	: Hand Woven Random Cut / Loop
Pile Material	: 100% Nylon 6.0
Secondary Backing	: Cotton Cloth
Pile Weight	: ca. 2.40 kg / sq mtr +/- 7.5%
Total Weight	: ca. 3.60 kg / sq mtr +/- 7.5%
Pile Height	: ca. 7 mm +/- 7.5%
Total Height	: ca. 10 mm +/- 7.5%
Usage Classification EN 1307:2014	: Heavy Domestic / General Commercial
Comfort rating EN 1307: 2014	: LC 5
Static Electricity Charge	: Antistatic
Colour Fastness to Light ISO 105 B02:2013	: 5
Rubbing Fastness - Dry ISO 105-X12:2016	: 5
Rubbing Fastness - Wet ISO 105-X12:2016	: 5
Colour Fastness to Water ISO 105-E01:2013	: 5
TOG Rating	: 1.14
Burn behaviour BS EN 13501-1:2007	: Cfl-s1
Stair suitability	: Yes
Widths	: 4 mtr +/- 1%
Cut length service	: Yes
Standard rug sizes	: No
Bespoke rug service	: Yes

Matching : This sample may not be from the same batch as current stocks and should be used only as a guide.

Installation : Professional installation is recommended and essential to a good quality underlay. Avoid exposure direct sunlight. Areas that might receive prolonged exposure to direct sunlight should be protected by the use of blinds or curtains.

Cleaning : Professional cleaning recommended.

Maintenance : To maintain your carpets appearance it is recommended that it is vacuumed at least three times per week to remove particles of dirt and dust.

It should be noted that overtime foot traffic will flatten the pile in main walkways, causing areas of differential wear. This can cause the carpet to show areas of light and dark shading, this happens to all quality carpets and would not be accepted as a basis for any complaint.

