

Coco



MADE IN BELGIUM



4m





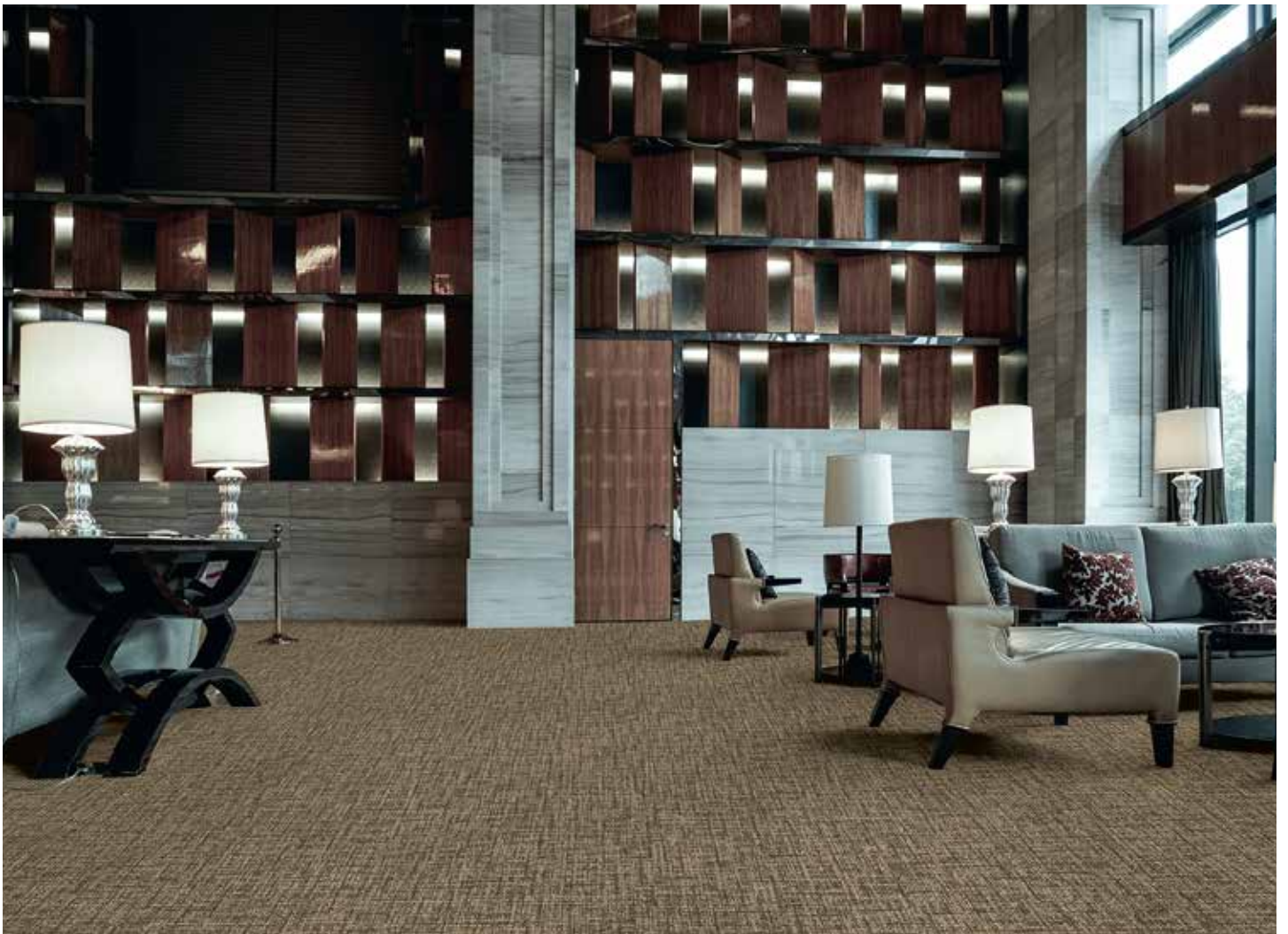
Monarch

12



Chocolate

40



Sandstone

36



Basalt

96



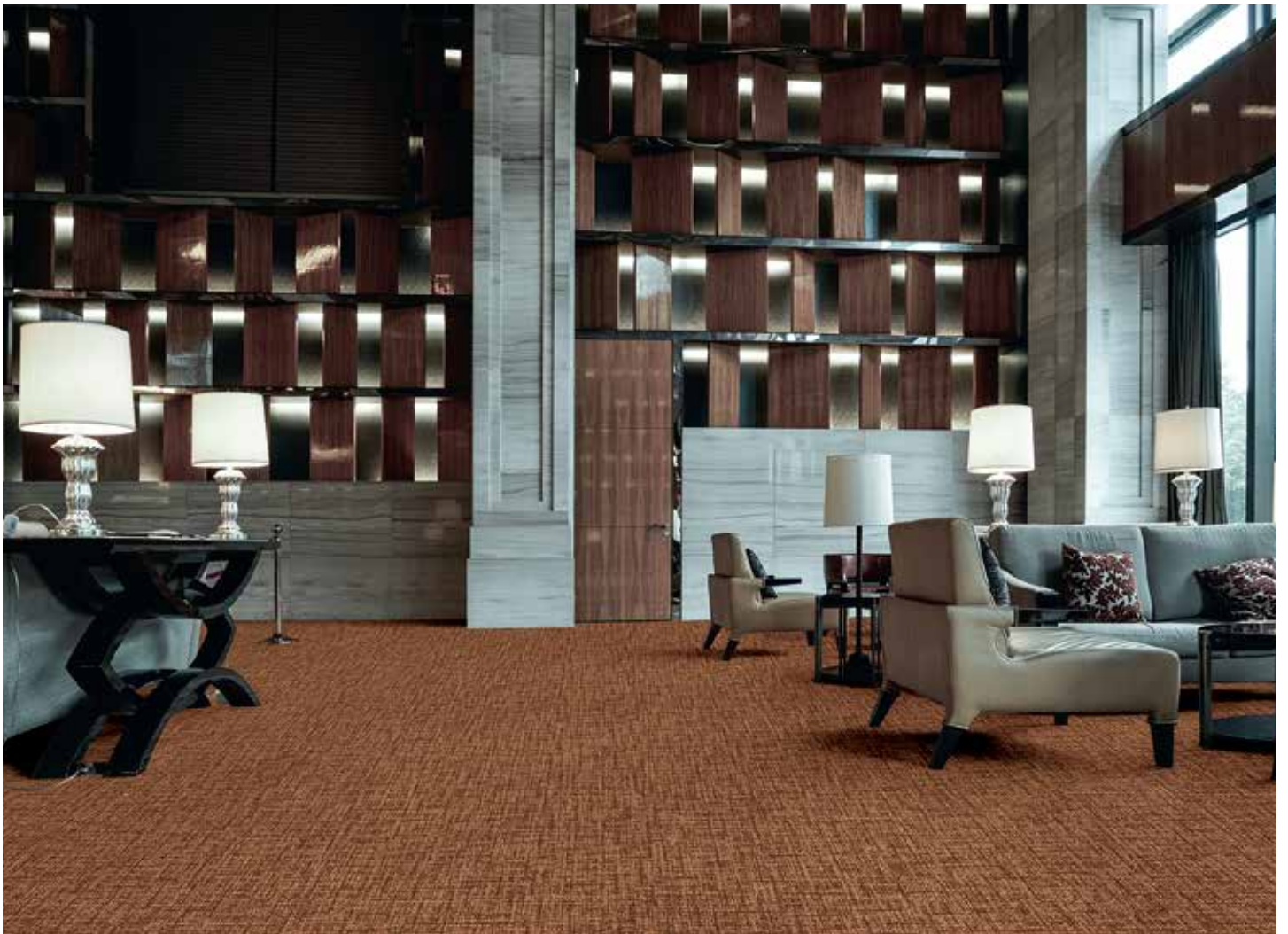
Midnight

78



Taupe

49



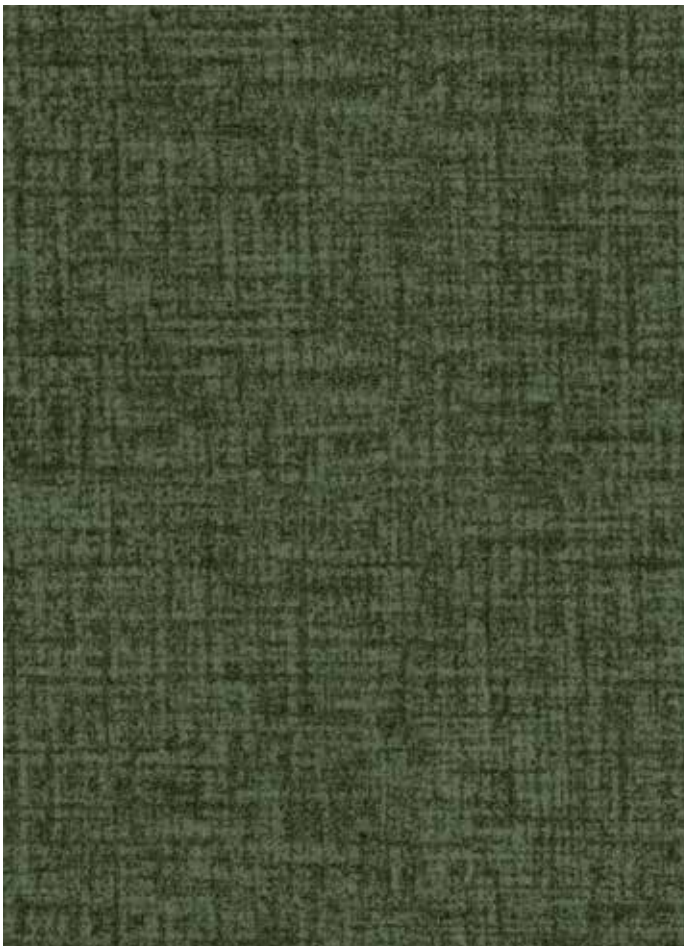
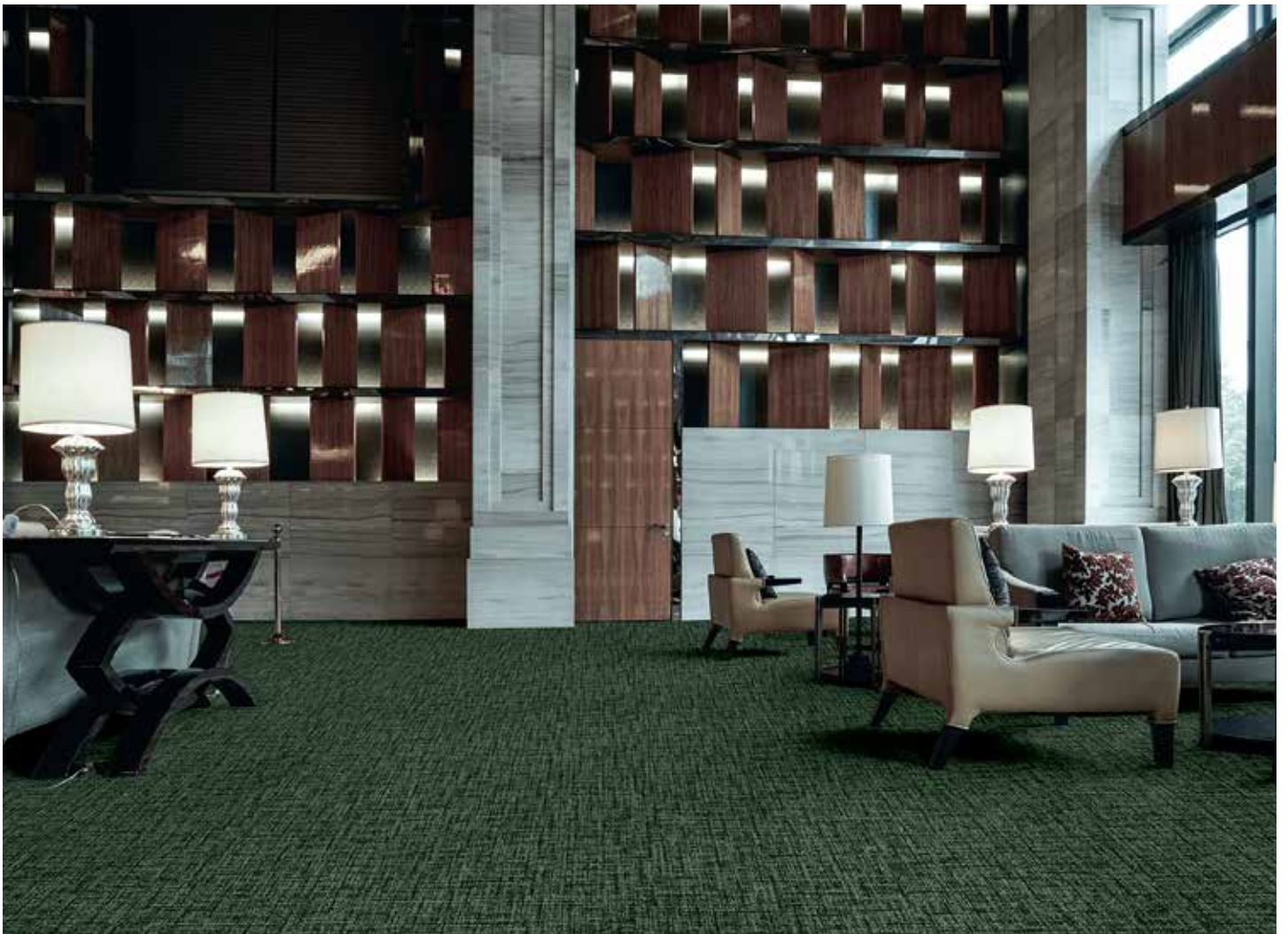
Terracotta

80



Bistro

45



Amazone

24



Bluestone

74



Velours	100% PA
Dossier	Feltbac
Poids g/m ²	1.000
Épaisseur totale en mm	8,5
Hauteur du velours en mm	7,5
Jauge	1/10
Densité: points/m ²	205.400
Poids total: g/m ²	1.800
Résistance thermique m ² C°/W	0,13
Isolation Phonique	DL_w = 26 dB
Classement feu	C_{fl} - s1 (17/1781) U₃P₃E₁C₀ (04/158-27-00)
Raccord	L/H: 95 cm - B/W: 100 cm
DOP	1008#BL0011

DOMAINE D'USAGE

Usage d'habitation : intensive : Séjour, Salle à manger, Circulations, Escaliers, Bureau Privé
Usage professionnel : normal : Chambre d'hôtel, Boutique, Magasin, Restaurant,
Salle de Réunion, Circulations, Bureaux, Escaliers

Pile	100% PA
Backing	Feltbac
Pile weight g/m ²	1.000
Total thickness in mm	8,5
Pile height in mm	7,5
Gauge	1/10
Tufts per sqm	205.400
Total weight in g/m ²	1.800
Thermal resistance in m ² C°/W	0,13
Sound absorption	DL_w = 26 dB
Fire Classification	C_{fl} - s1 (17/1781) U₃P₃E₁C₀ (04/158-27-00)
Repeat	L/H: 95 cm - B/W: 100 cm
DOP	1008#BL0011

PERFORMANCE

Domestic use : heavy : Living room, Dining room, Entrance, Hallway, Stairs, Study
Contract use : general: Hotelroom, Boutique, Shop, Restaurant, Conference room,
Office, Stairs

