



COPACABANA

(IN &) OUTDOOR CARPET COLLECTION

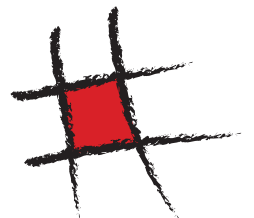
AMAPA
RIO



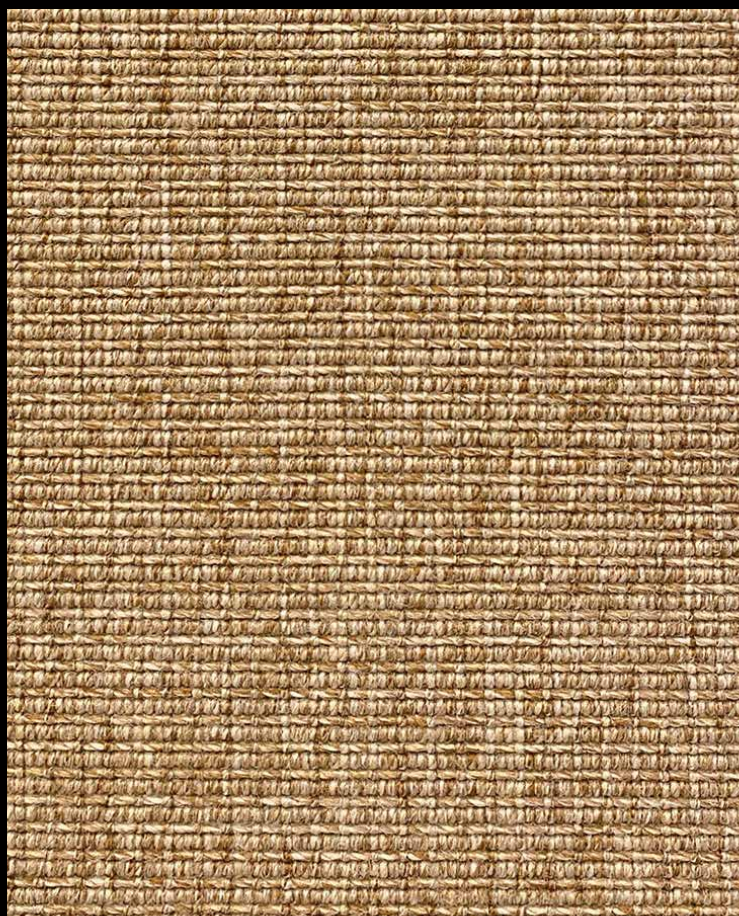
4m



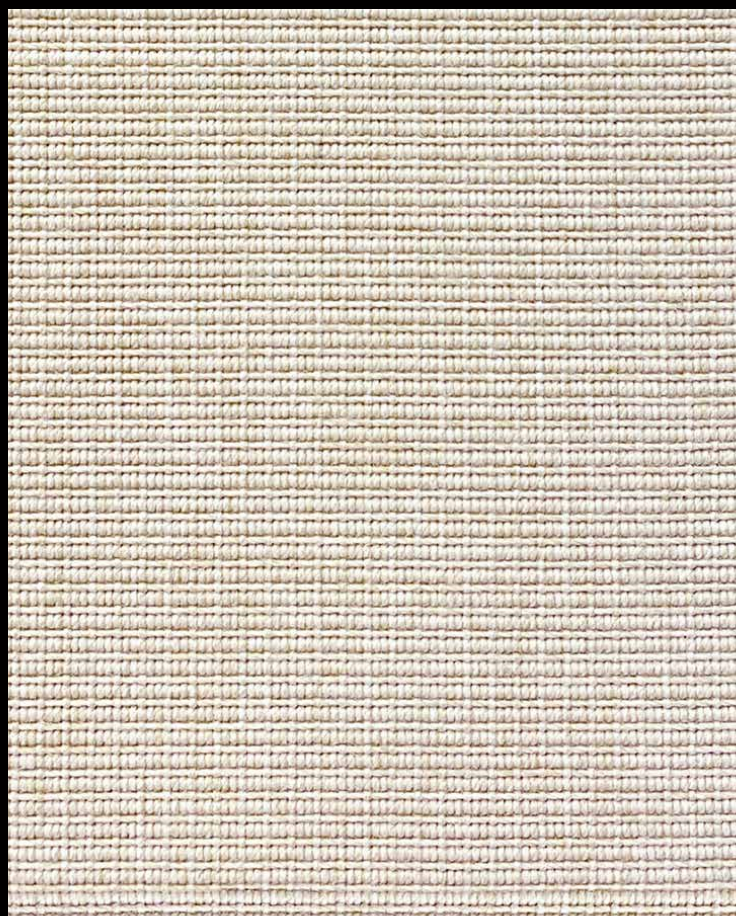
MADE IN
BELGIUM



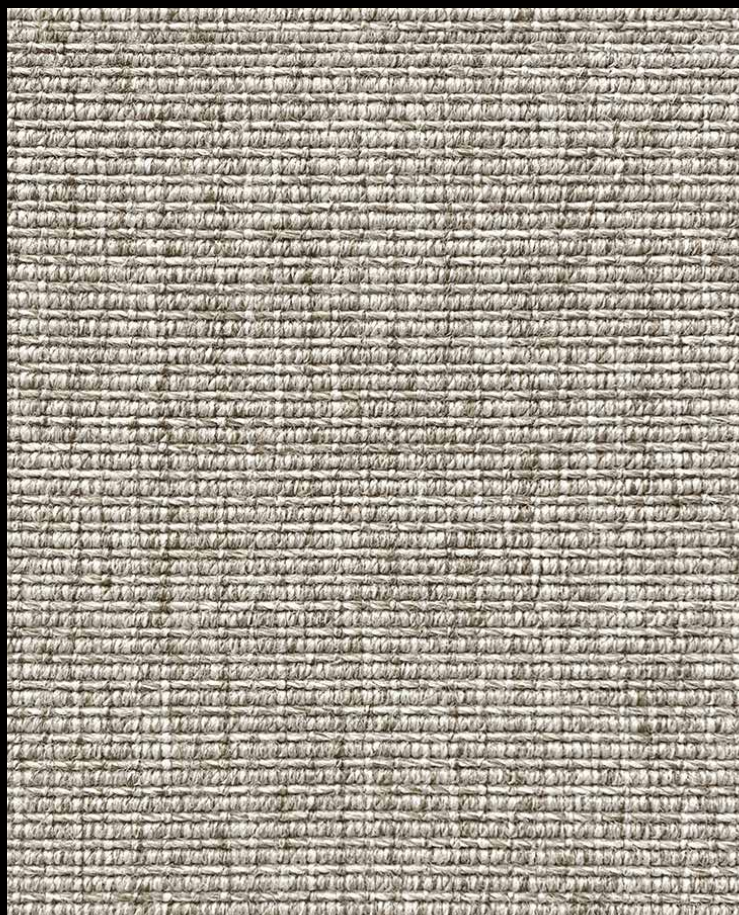
AMAPA



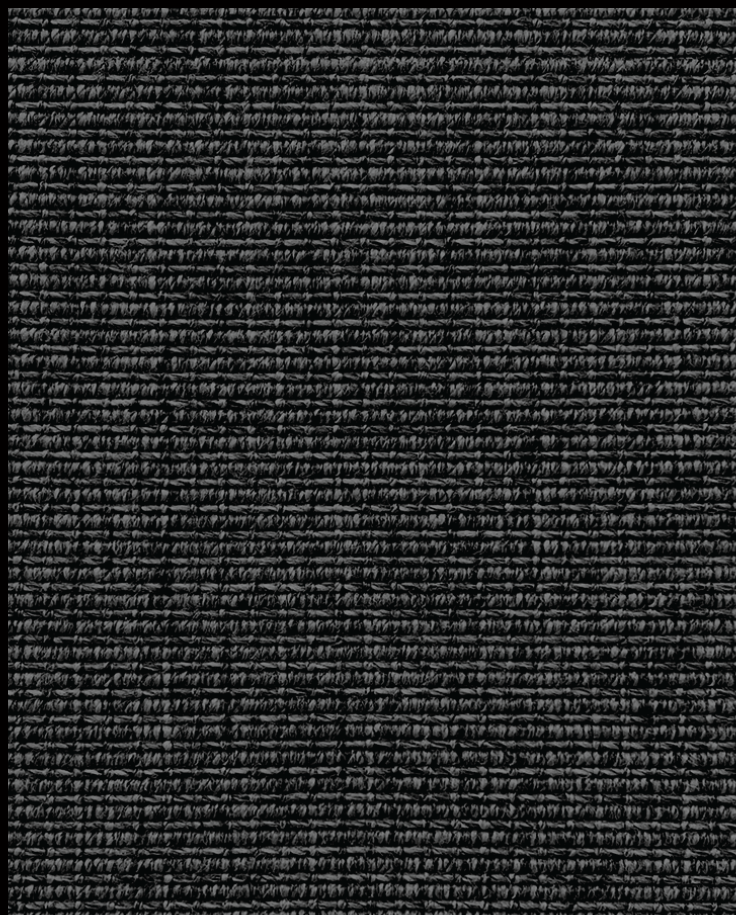
AMAPA 35



AMAPA 03



AMAPA 90



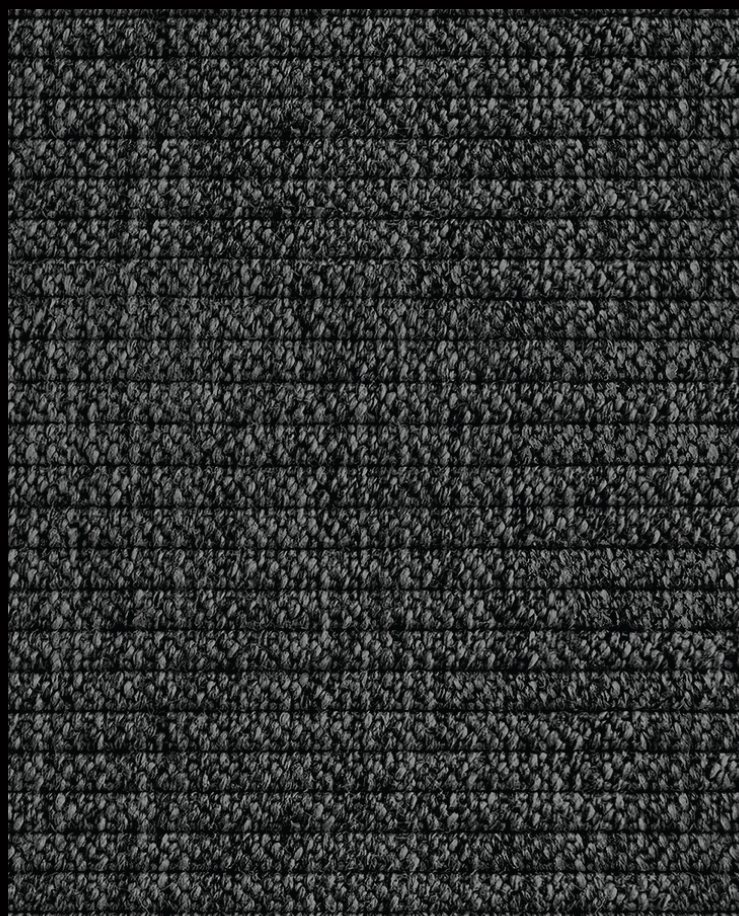
AMAPA 99



RIO



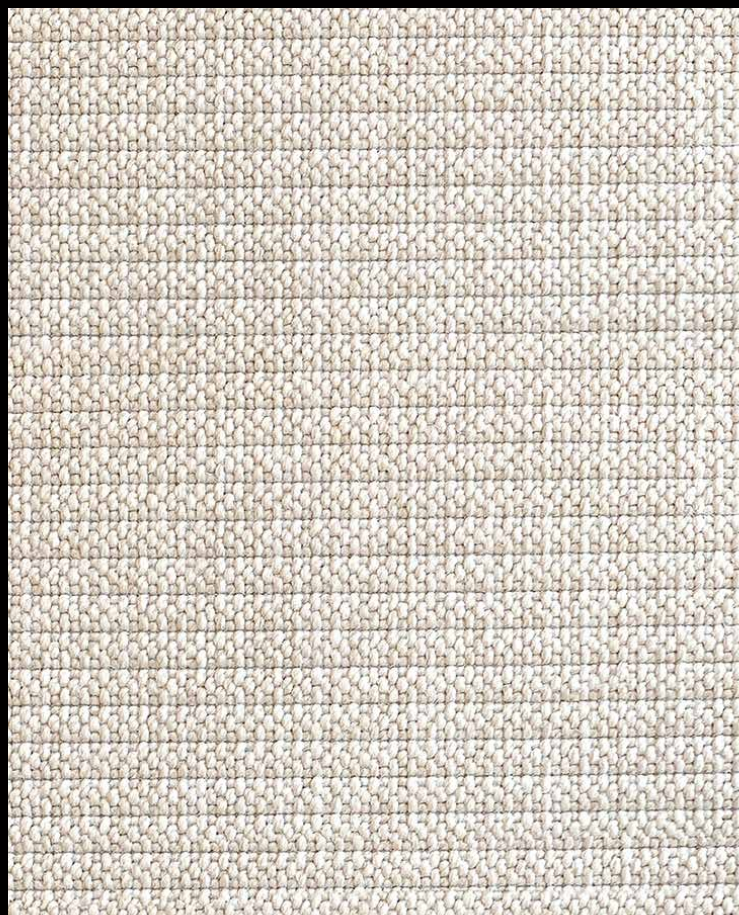
RIO 90



RIO 99



RIO 35



RIO 03



Rio 99



Rio 90

FABRIC & PE/PVC

OFF WHITE

PES 20

BEIGE

PES 22

SAND

PES 21

TOBACCO

PES 501

GREY

PES 31

CHOCOLATE

PES 16

BLACK

PES 25

WHITE

7407/5001

SILVER

7407/5003

BEIGE

7407/5014

SAND

7407/5013

BROWN

7407/5048

BLACK

7407/5005

FABRIC & PE/PVC

BORDER

OUTDOOR BORDERS

12 cm Band



Logo Red SJA 5477 137

True Blue SJA 5499 137

Deauville Black DEA 5032 140

Sorbet BEN 10107 140

Honey BEN 10108 140

Carrot BEN 10109 140

Carbon Sky NAT 10064 140

Weasel NAT 10101 140

Carbon Beige NAT 10065 140

Charcoal Chine NAT 10063 140

Dark Taupe NAT 10059

Sooty NAT 10030

 sunbrella™

ACRYLIC BORDER



Rio 90

Pile / Velours	100 % PP
Backing / Dossier	SBR Coating
Total thickness in mm / Epaisseur totale en mm	5-6
Tufts per sqm / Densité: points/m ²	224.000
Total weight in g/m ² / Poids total: g/m ²	1.600
Thermal resistance in m ² C°/W / Résistance thermique m ² C°/W	0,10
Impact sound isolation / Isolation aux bruits d'impact	DL_w = 22 dB
Fire Classification / Classement feu	Efl
Repeat / Rapport	L/H: 1.7 cm
DOP	1008-SL0001

PERFORMANCE : DOMESTIC USE : HEAVY : Living Room, Dining Room, Entrance, Hallway, Stairs, Terraces, Garden, Pool & Beach areas



EN 14041

DOP: 1008#SL0001



For use as floor covering in buildings.

