



MAVERICK®
COMMERCIAL CARPET TILES

MANTRA



MADE IN
BELGIUM

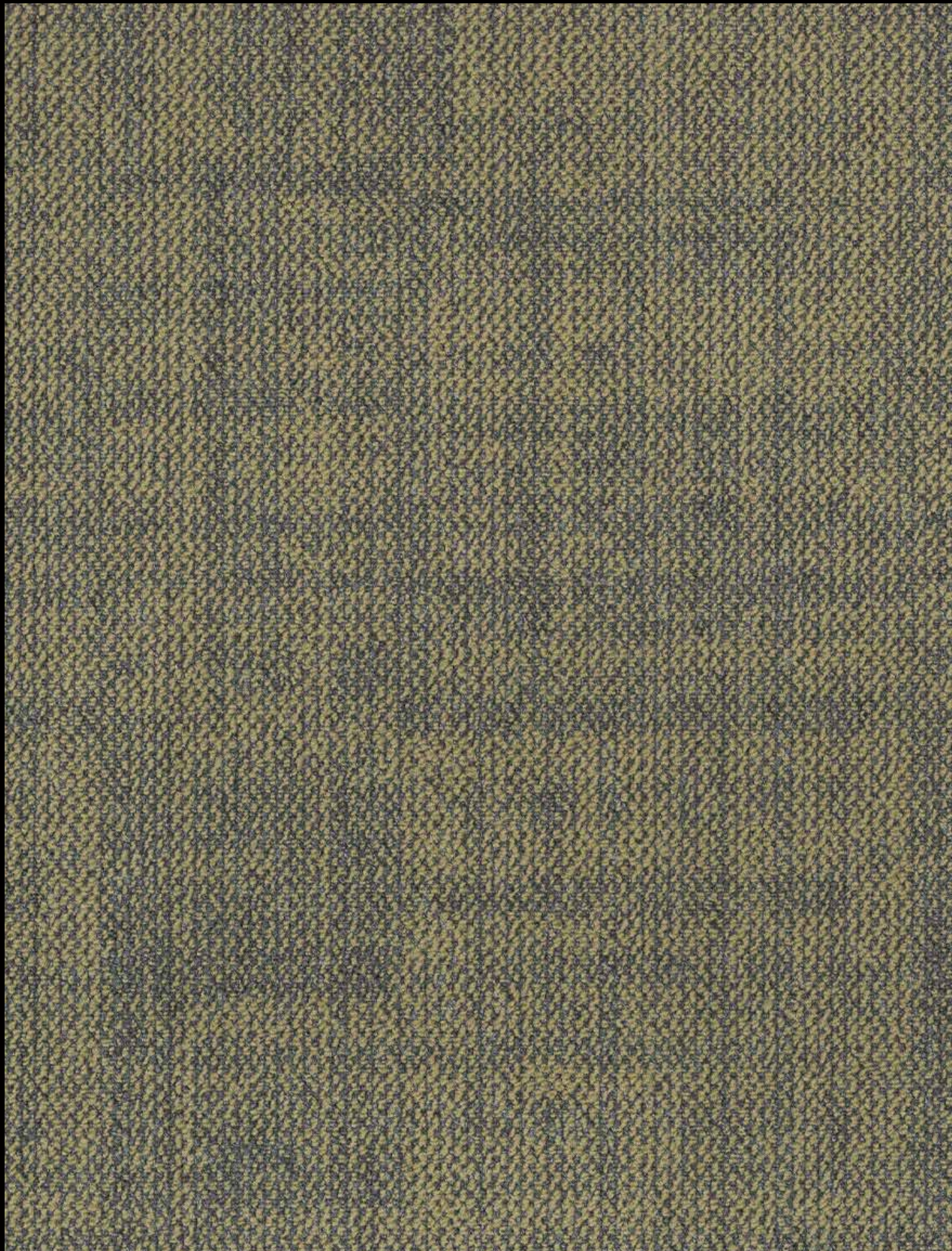


50cm
TILE





MANTRA



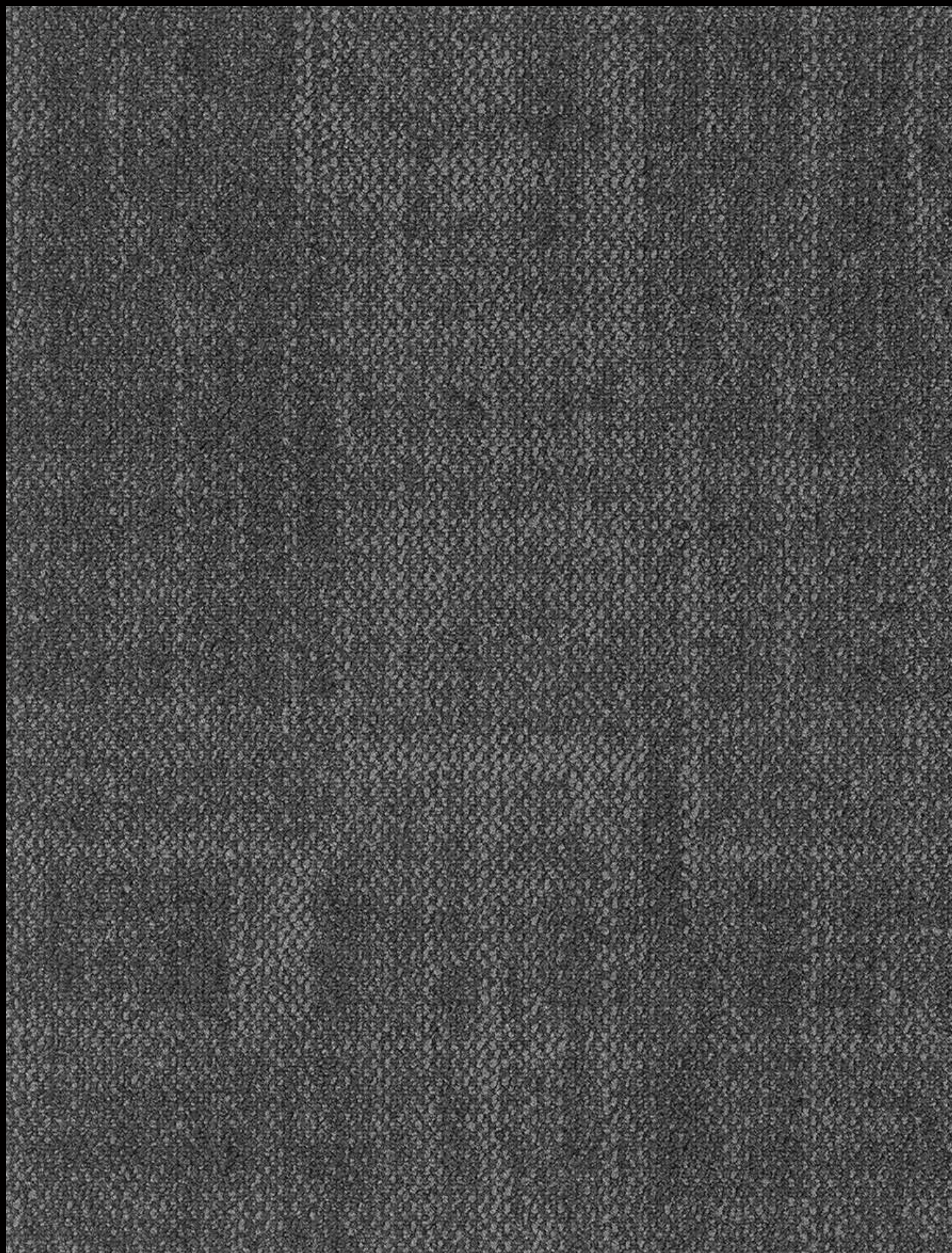
MANTRA 29 Moss



Anthracite 98
Dove 94
Moss 29

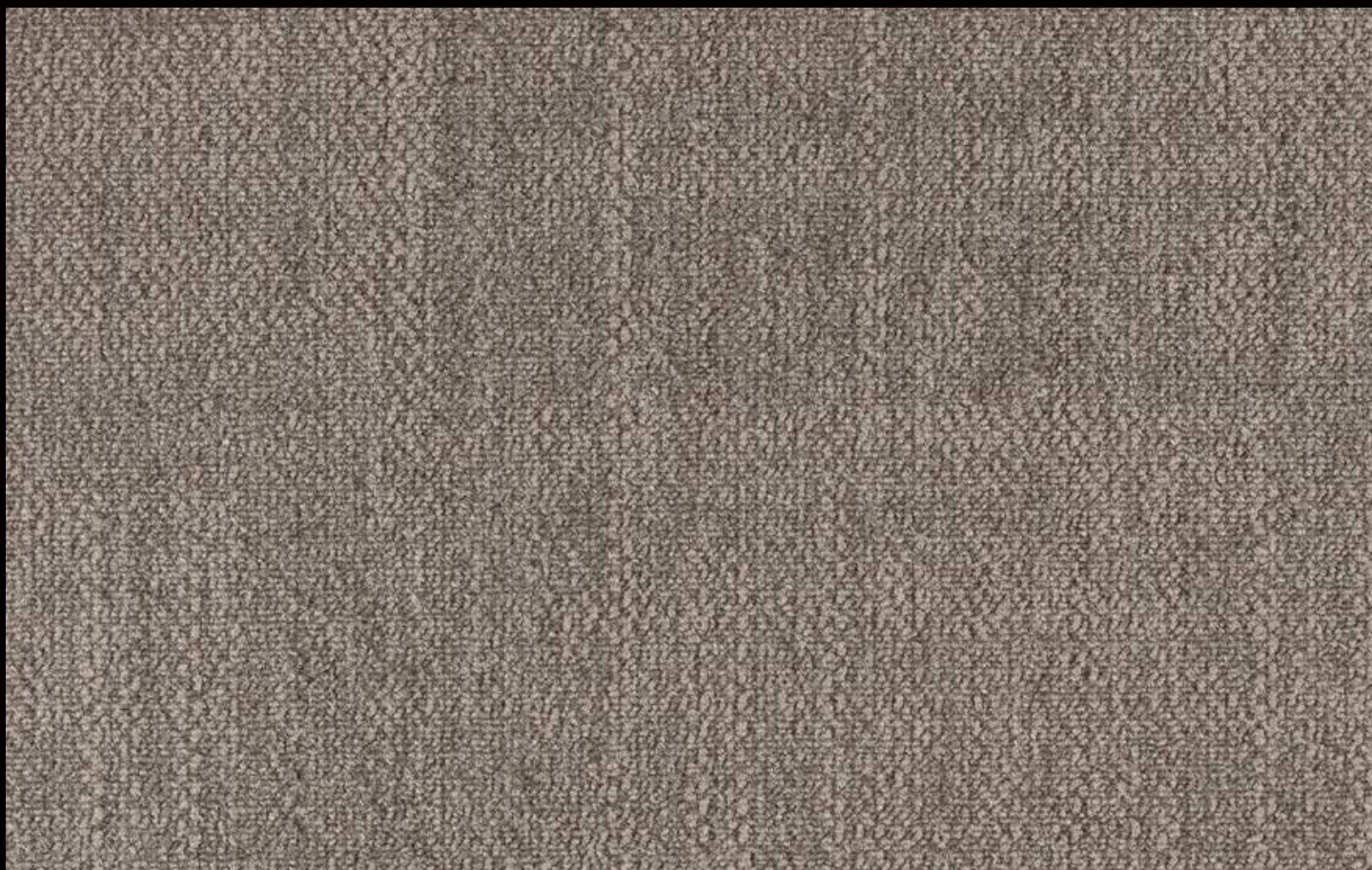


MANTRA

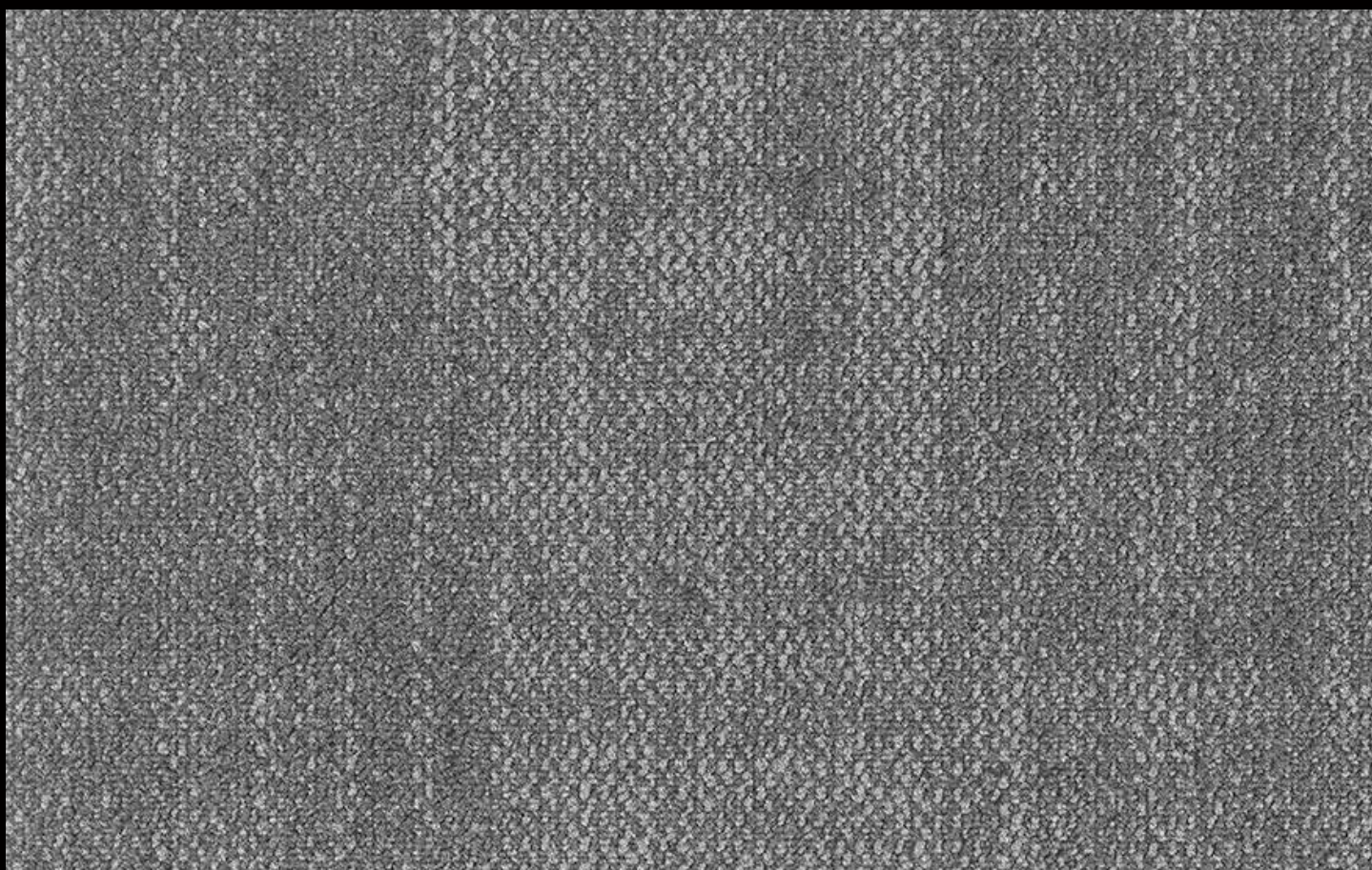


MANTRA 98 Anthracite

MANTRA



MANTRA 94 Dove



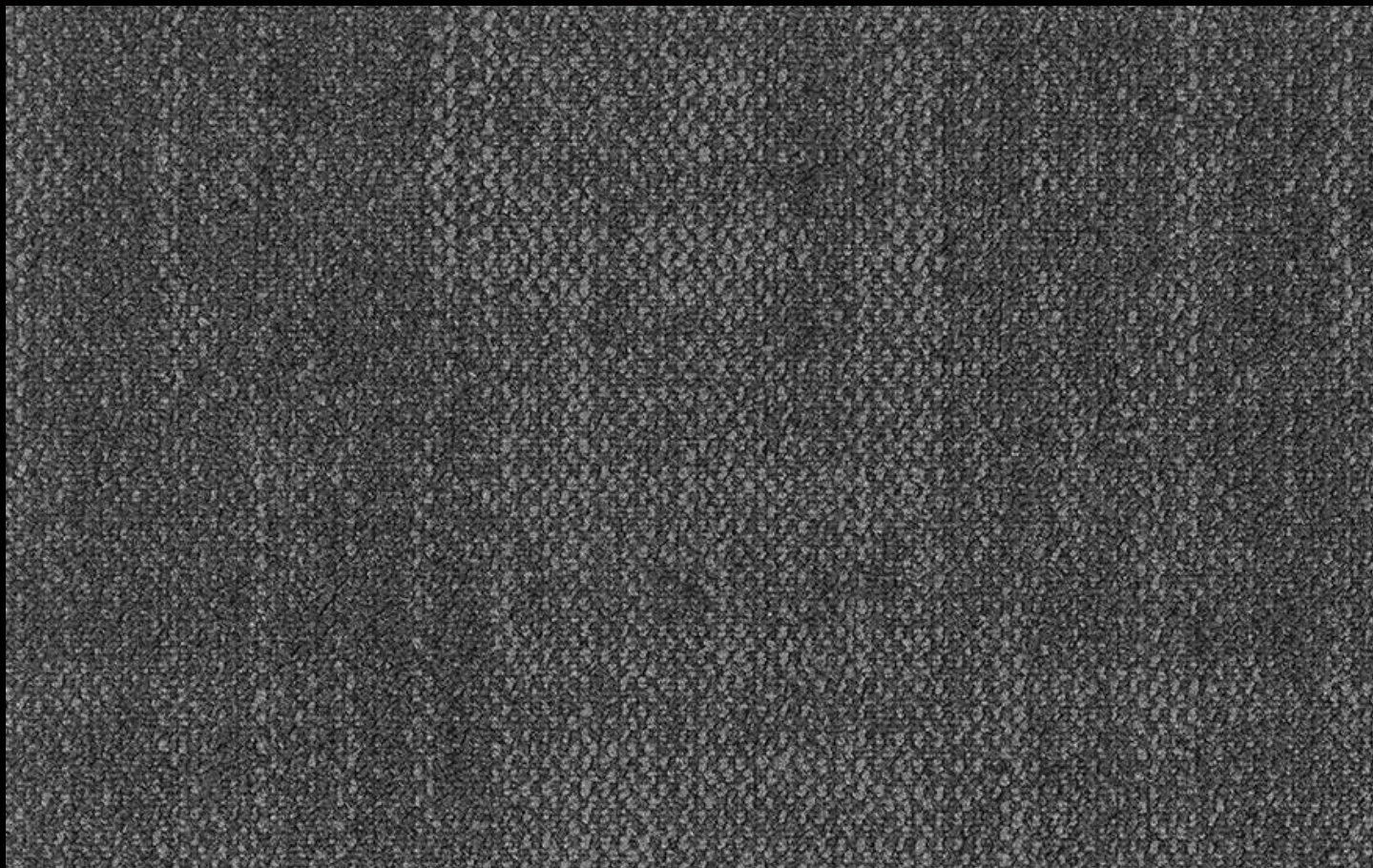
MANTRA 97 Nightfall



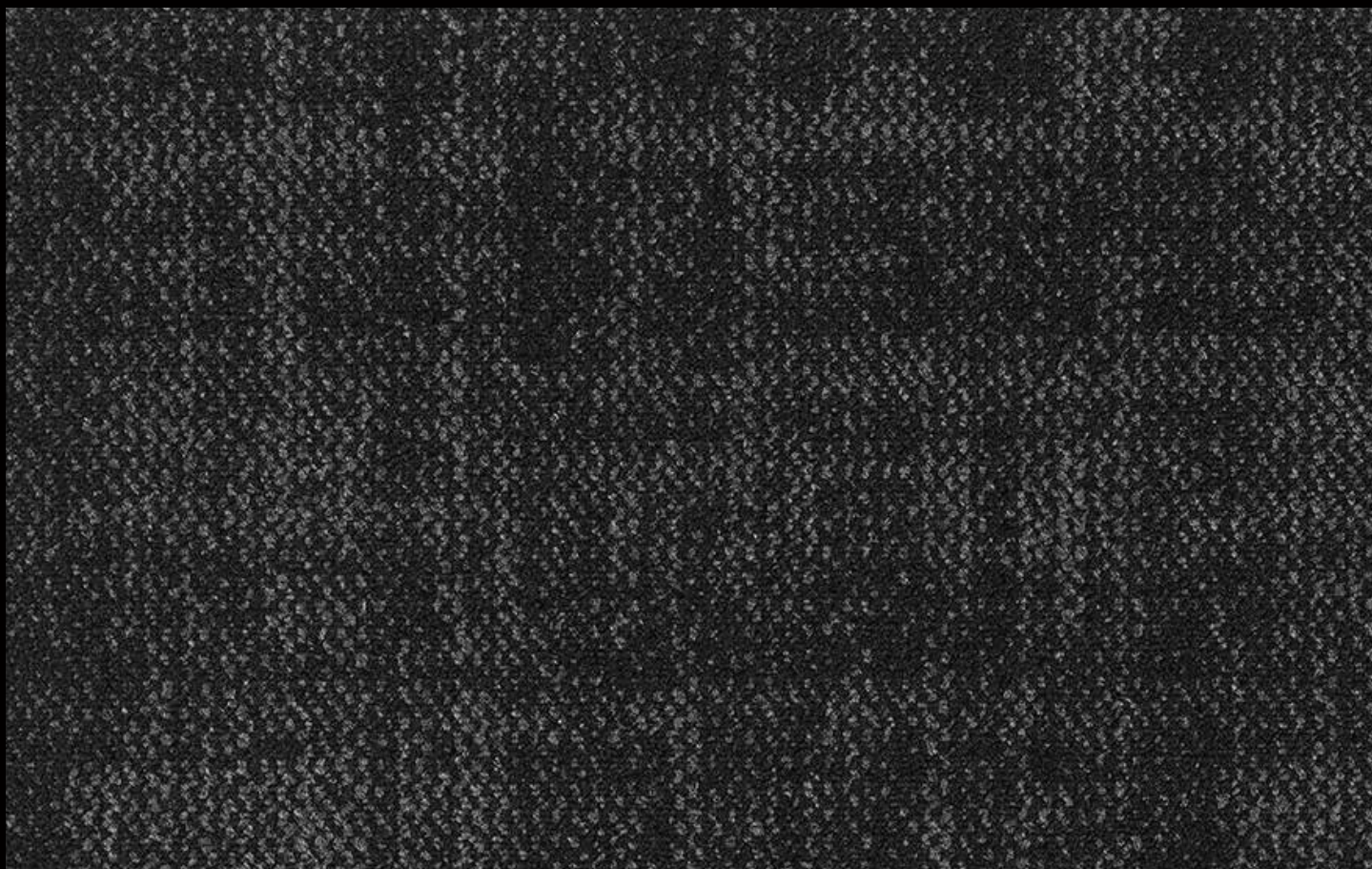
MANTRA

50cm
50cm

TILE



MANTRA 98 Anthracite



MANTRA 99 Smoke



Rust 89
Nightfall 97
Smoke 99

MANTRA



MANTRA 89 Rust



Rust 89
Dove 94
Anthracite 98

Type of manufacture (carpet tile) Art der Herstellung (Teppichfliese) Methode de fabrication (dalle de moquette)	ISO 2424		1 / 10 Loop Pile (tufted)
Dimensions Abmessungen Dimensions	EN ISO 24342	cm	50cm x 50cm (24 tiles/box)
Primary backing Trägermaterial Premier dossier	ISO 2424		Polyester non-woven
Secondary backing Rückenausrüstung Envers sous-couche	ISO 2424		Bitumen
Pile fibre composition Faserzusammensetzung der Nutzschicht Composition du velours	ISO 2424		100% Solution Dyed Nylon (SDN)
Total thickness Gesamtdicke Épaisseur totale	ISO 1765	mm	5,2
Effective pile thickness Polschichtdicke Épaisseur du velours	ISO 1766	mm	2,2
Total mass Gesamtgewicht Masse surfacique totale	ISO 8543	g/m ²	3.606
Total pile mass Poleinsatzgewicht Masse surfacique de velours totale	ISO 2424	g/m ²	350
Effective pile mass Polschichtgewicht Masse surfacique de velours utile	ISO 8543	g/m ²	253
Pile density Pol-Rohdichte Densité du velours	ISO 8543	g/cm ³	0,114
Number of tufts Noppenzahl Nombre de touffes	ISO 1763	/dm ²	2.301
Static electrical propensity Begehtest Test du marcheur	ISO 6356	kV	≤2
Use classification Beanspruchungsbereich Classement d'usage	EN 1307		33 Contract use - Heavy 33 Objektbereich - Extrem 33 Professionnel - Intensive
Luxury rating Komfortklasse Classement de confort	EN 1307		LC1
Thermal resistance Wärmedurchlaßwiderstand Résistance thermique	ISO 8302	m ² .K/W	0,09
Dimensional stability Dimensionsstabilität Stabilité dimensionnelle	EN 986	%	≤ 0,20
Flammability Brennverhalten Tenue au feu	EN 13501-1		Bfl - s1 Loose laid (2021 / 117-1)
Prodis - GUT	www.pro-dis.info		128395
DOP			1008#IL0011
Laying direction Verlegerichtung Sens de pose			