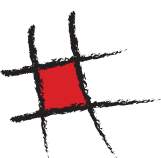


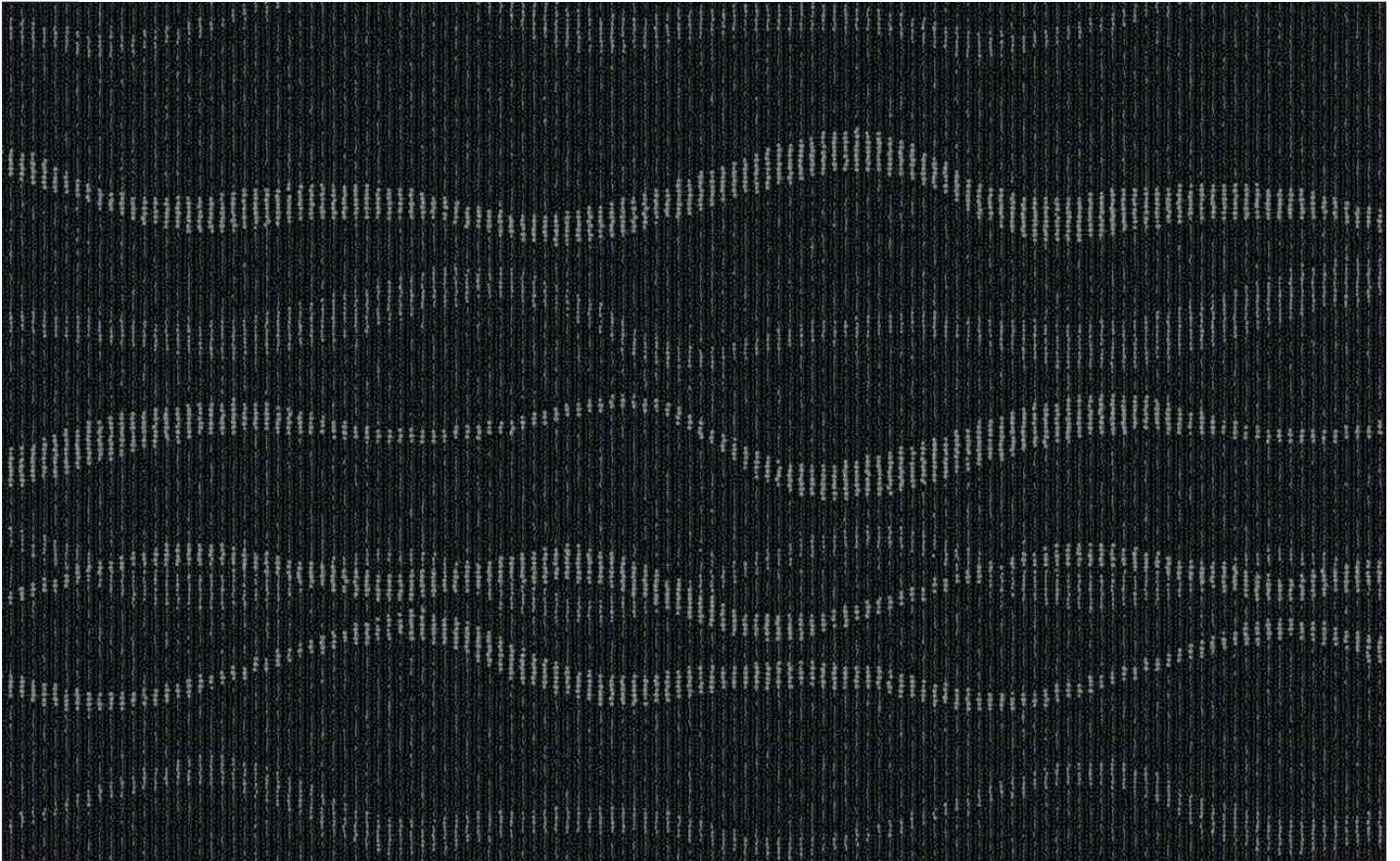


# Tahiti

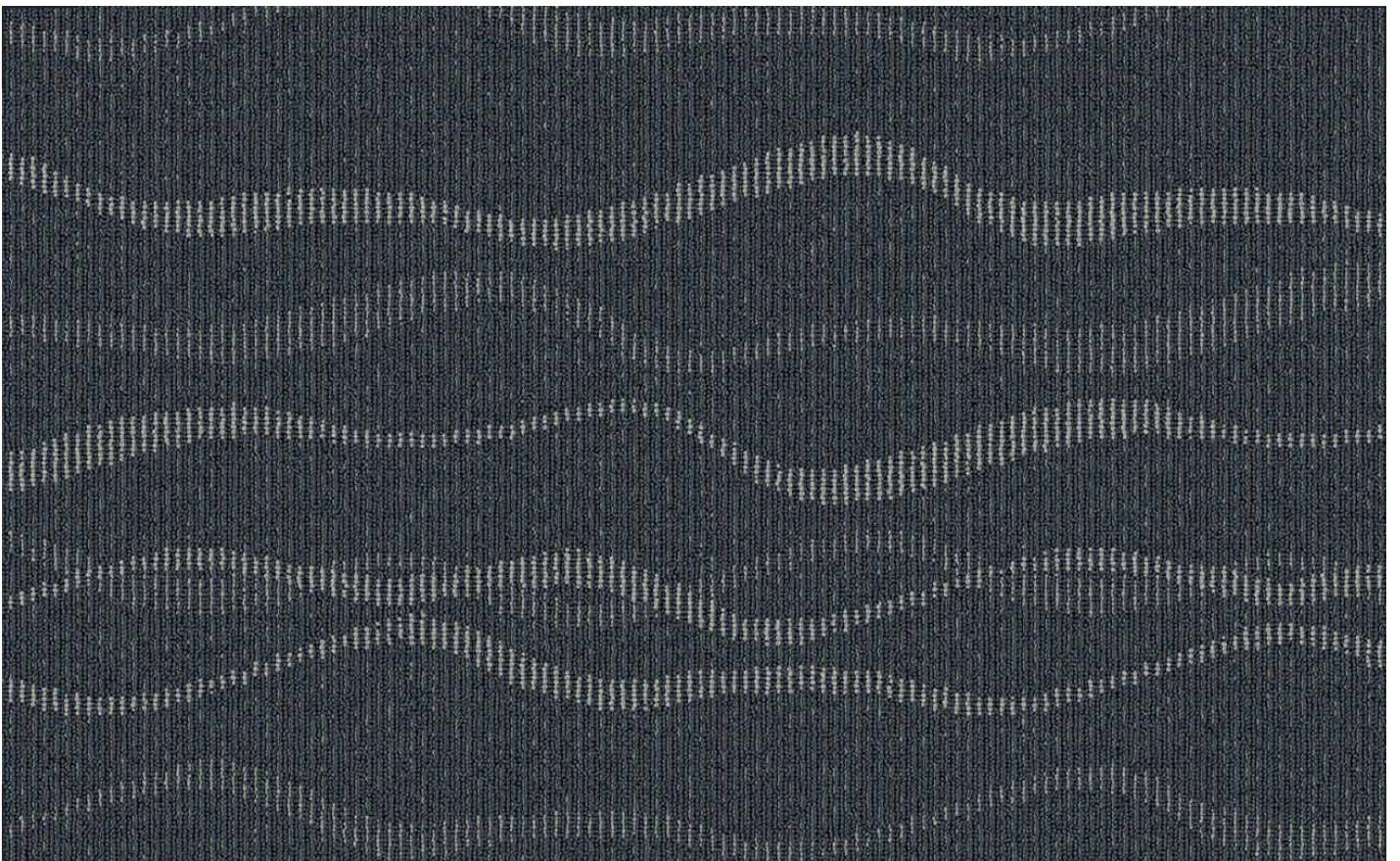
Tahiti 757-747

Structured Loop Carpet Tiles  
50 x 50 cm

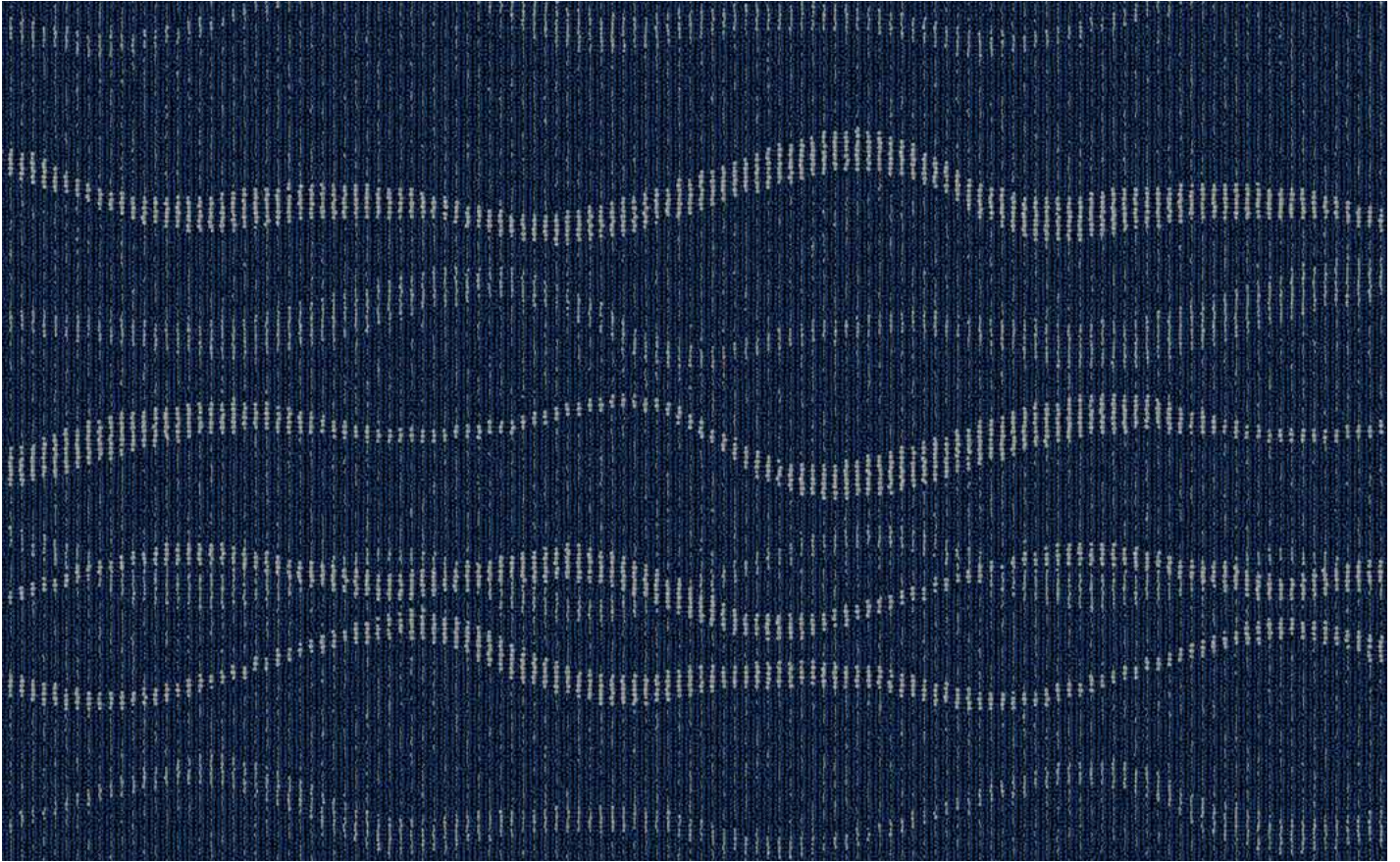




Tahiti 779 - Charcoal



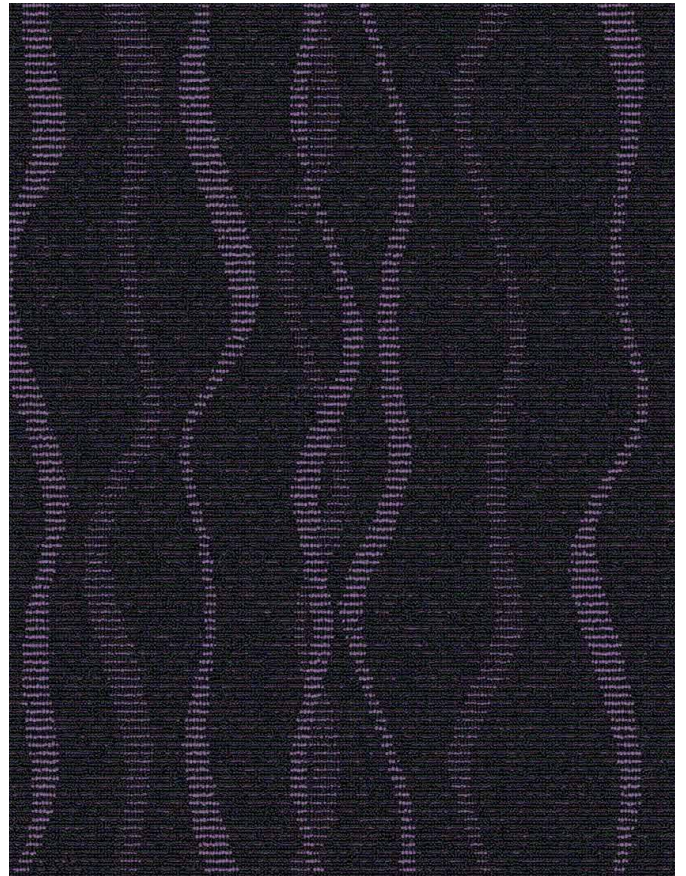
Tahiti 777 - Grey



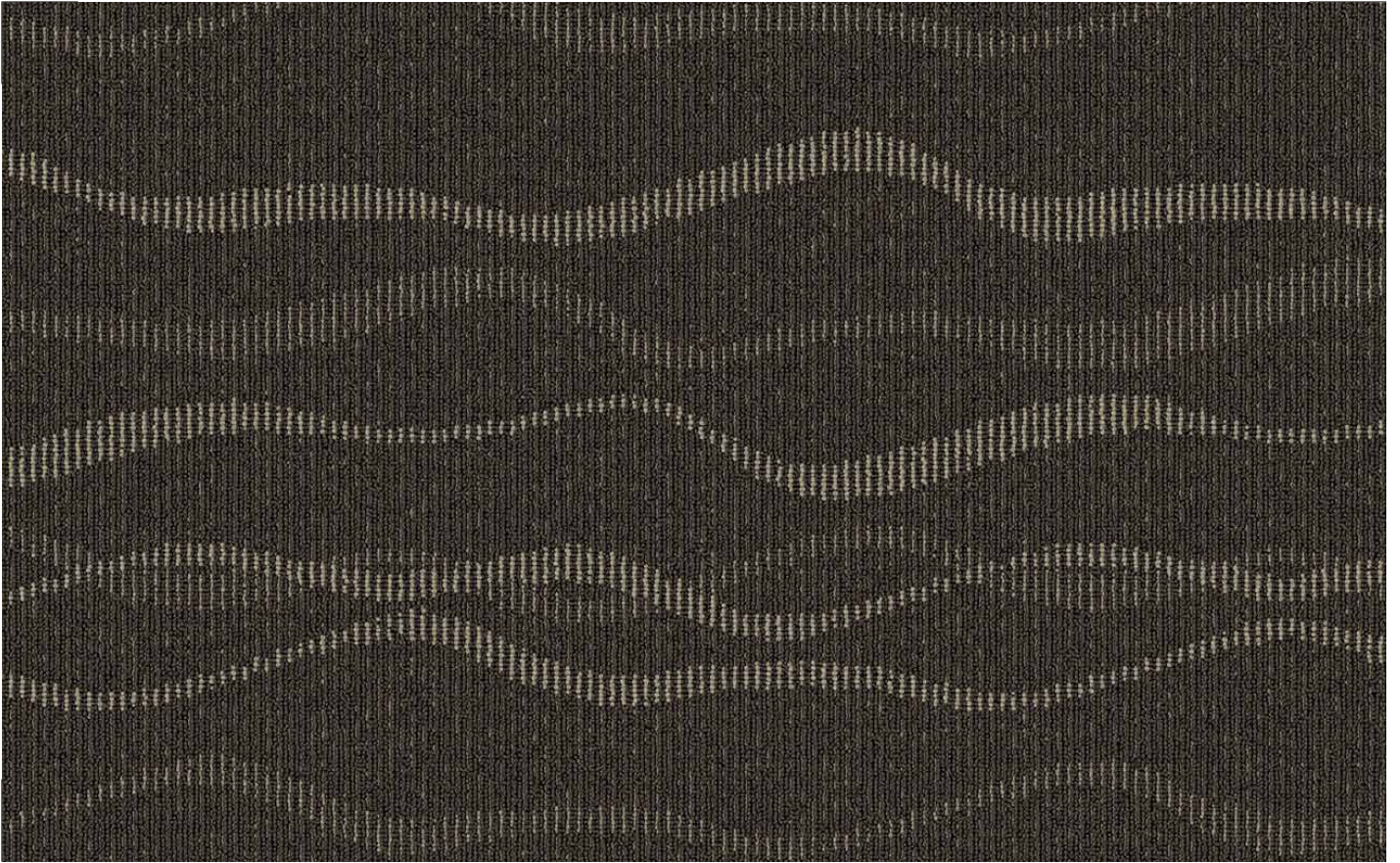
Tahiti 757 - Royal Blue



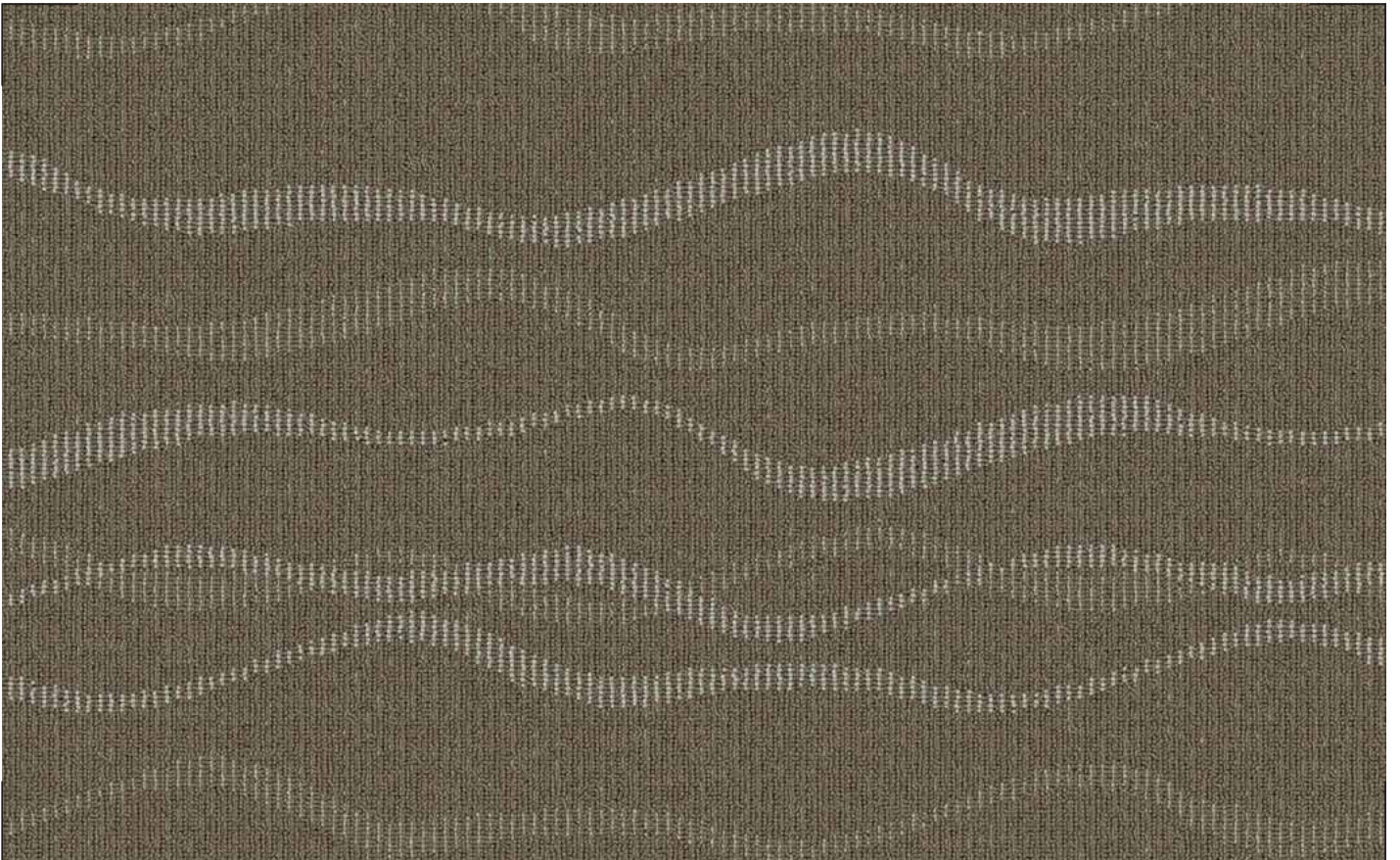
Tahiti 752 - Red



Tahiti 785 - Violet



Tahiti 748 - Brown



Tahiti 747 - Beige

# Tahiti

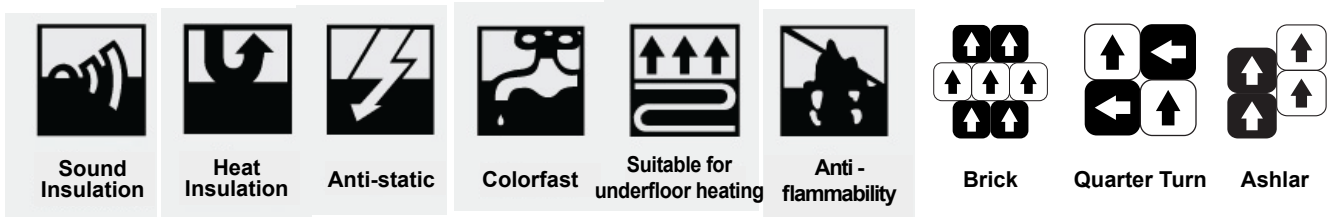


## Product Specification:

Style	:	TAHITI
Construction	:	Loop Pile
Pile Fiber Composition	:	100% Olefin
Yarn Type	:	BCF
Dye Method	:	Solution Dyed
Gauge	:	1/12"
Pile Height	:	2.3 mm / 5.5 mm ± 0.25mm
Pile Weight	:	650 g/m <sup>2</sup>
Total Weight	:	4700 g/m <sup>2</sup>
Primary Backing	:	PES/PA Fleece (Non woven Textile)
Secondary Backing	:	PVC reinforced by Glass Fiber
Total Thickness	:	7.5 ± 0.5mm
Number of Tufts	:	184860/m <sup>2</sup> (Approx)
Tile Size	:	50cm x 50cm
Area of use	:	Commercial
Packing	:	20pcs/carton (5m <sup>2</sup> )

## Performance Specification:

Flammability	:	ASTM D-2859/FFI-70/16CFR 1630 Pass 8/8
Smoke Density	:	ASTM E662 Less than 450
Static Propensity	:	AATCC - 134 under 3.5 KV
Colour Fastness	:	5:5 on Gray Scale
Soiling Propensity	:	AATCC123 Gray Scale 5
Dimensional Stability	:	DXN 54318 6.20



**Terms and Conditions:** Specifications are subject to manufacturing tolerances and maybe changed without prior notice. Dye lots may vary in colour from sample and between production lots. All product purchases are subject to Teksol standard terms and conditions of sale. Please refer to our installation guideline, maintenance manual and warranty document for further clarification.

**Disclaimer:** This Brochure is presented for informational purposes only. Every effort is made to ensure that carpet images are of an accurate representation of the product. However, they are for illustrative purposes only and colour variations may occur in actual product, and between dye series, Please note that linear patterns when installed directional, may produce an undesired effect when lines of the same colour meet at edges. Installers need to monitor this during installation and reposition tiles where appropriate. Patterns that are random in nature may contain additional colour ways to the ones displayed on the samples. Please consult your commercial sales consultant for further informations.